

**Port of Barcelona traffic statistics**

**Accumulated data December 2019**

**Statistics Service**

## Index

---

### Traffic indicators

Total traffic	3
Main indicators	4
Breakdown of total traffic	5
Breakdown of traffic in transit	6
Monthly evolution of traffic	7

### Container traffic

TEU evolution	8
Container traffic (TEU)	9

### Passenger traffic

Passenger traffic	10
Passenger classification	11

### Automobile traffic

Automobile traffic	12
--------------------	----

### Short Sea Shipping traffic (SSS)

SSS Goods classification	13
SSS General cargo and Motorways of the sea (MoS)	14
SSS Ranking countries	15

### Vessel traffic

Vessel traffic	16
----------------	----

### Goods traffic

Mode of packaging and navigation	17
Goods by classification 4.3.7.	18
Goods ranking	19
Containerized goods by classification 4.3.7.	20

### Maritime traffic by origin/destination

Geographical areas. Tonnes	21
Geographical areas. Full TEU non transit	22
Ranquing countries. Full TEU non transit	23

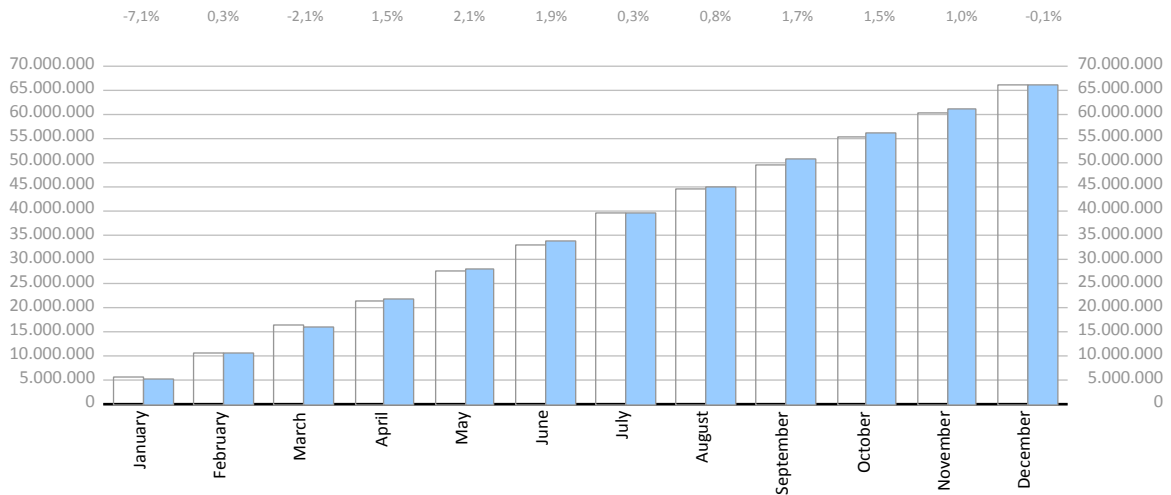
### Railway traffic

Evolution of railway traffic (TEU and automobile)	24
Evolution of railway traffic (Solid and liquid bulk)	25
Railway gauge traffic	25

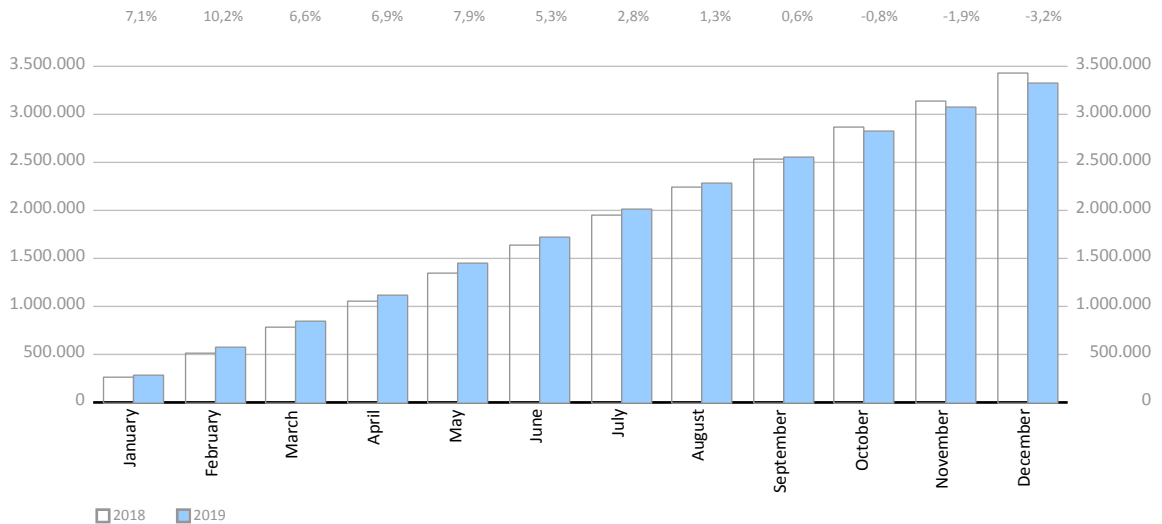
# TRAFFIC INDICATORS

Total traffic	Monthly accumulated				% 19-18 accum. November	% 19-18 accum. October	Total traffic 2018
	2018	2019	Diff. 19-18	%			
<b>Total throughput</b>	<b>66.003.759</b>	<b>65.958.084</b>	<b>-45.675</b>	<b>-0,1%</b>	<b>1,0%</b>	<b>1,5%</b>	<b>66.003.759</b>
Supplies	1.856.811	1.731.725	-125.086	-6,7%	-6,6%	-5,4%	1.856.811
Fishing	3.172	3.575	403	12,7%	13,2%	13,3%	3.172
<b>TOTAL TRAFFIC (t)</b>	<b>67.863.742</b>	<b>67.693.384</b>	<b>-170.358</b>	<b>-0,3%</b>	<b>0,8%</b>	<b>1,3%</b>	<b>67.863.742</b>
<b>TEU</b>	<b>3.433.088</b>	<b>3.324.650</b>	<b>-108.438</b>	<b>-3,2%</b>	<b>-1,9%</b>	<b>-0,8%</b>	<b>3.433.088</b>
<b>Passengers (units)</b>	<b>4.494.196</b>	<b>4.628.562</b>	<b>134.366</b>	<b>3,0%</b>	<b>3,7%</b>	<b>3,1%</b>	<b>4.494.196</b>
<b>Automobiles (units)</b>	<b>810.172</b>	<b>777.688</b>	<b>-32.484</b>	<b>-4,0%</b>	<b>-4,4%</b>	<b>-2,9%</b>	<b>810.172</b>
<b>Vessels (units)</b>	<b>9.038</b>	<b>8.901</b>	<b>-137</b>	<b>-1,5%</b>	<b>-1,6%</b>	<b>-1,1%</b>	<b>9.038</b>
<b>UTI</b>	<b>408.633</b>	<b>410.531</b>	<b>1.898</b>	<b>0,5%</b>	<b>-0,2%</b>	<b>-0,6%</b>	<b>408.633</b>

Monthly evolution of the accumulated traffic of goods. Tonnes



Monthly evolution of the accumulated traffic of goods. TEU



## TRAFFIC INDICATORS

Main indicators	Monthly accumulated				Last 12 months	Total traffic 2018	% 12 months-2018
	2018	2019	Diff. 19-18	%			
<b>Goods indicators by navigation and operation (tonnes)</b>							
<b>Navigation (t)</b>	<b>66.003.759</b>	<b>65.958.084</b>	<b>-45.675</b>	<b>-0,1%</b>	<b>65.958.084</b>	<b>66.003.759</b>	<b>-0,1%</b>
Domestic	8.764.619	8.720.073	-44.546	-0,5%	8.720.073	8.764.619	-0,5%
Foreign	57.239.140	57.238.012	-1.129	-0,0%	57.238.012	57.239.140	-0,0%
<b>Operation (t)</b>	<b>66.003.759</b>	<b>65.958.084</b>	<b>-45.675</b>	<b>-0,1%</b>	<b>65.958.084</b>	<b>66.003.759</b>	<b>-0,1%</b>
Loaded	19.967.431	19.417.718	-549.713	-2,8%	19.417.718	19.967.431	-2,8%
Unloaded	23.625.794	24.026.880	401.086	1,7%	24.026.880	23.625.794	1,7%
Transit	22.410.534	22.513.486	102.952	0,5%	22.513.486	22.410.534	0,5%
<b>Goods indicators by main units</b>							
<b>Containers (TEU)</b>	<b>3.433.088</b>	<b>3.324.650</b>	<b>-108.438</b>	<b>-3,2%</b>	<b>3.324.650</b>	<b>3.433.088</b>	<b>-3,2%</b>
TEU O/D	1.972.036	1.927.108	-44.928	-2,3%	1.927.108	1.972.036	-2,3%
TEU transit	1.461.052	1.397.542	-63.510	-4,3%	1.397.542	1.461.052	-4,3%
Containerized tonnes	34.913.786	34.182.740	-731.046	-2,1%	34.182.740	34.913.786	-2,1%
Level of containerization	75,14%	74,71%			74,71%	75,14%	
<b>Passengers (u)</b>	<b>4.494.196</b>	<b>4.628.562</b>	<b>134.366</b>	<b>3,0%</b>	<b>4.628.562</b>	<b>4.494.196</b>	<b>3,0%</b>
Regular line	1.451.979	1.490.644	38.665	2,7%	1.490.644	1.451.979	2,7%
Pleasure cruises	3.042.217	3.137.918	95.701	3,1%	3.137.918	3.042.217	3,1%
<b>Automobiles (u)</b>	<b>810.172</b>	<b>777.688</b>	<b>-32.484</b>	<b>-4,0%</b>	<b>777.688</b>	<b>810.172</b>	<b>-4,0%</b>
Loaded	498.474	477.685	-20.789	-4,2%	477.685	498.474	-4,2%
Unloaded	231.447	233.293	1.846	0,8%	233.293	231.447	0,8%
Transit	80.251	66.710	-13.541	-16,9%	66.710	80.251	-16,9%
<b>Vessels (u)</b>	<b>9.038</b>	<b>8.901</b>	<b>-137</b>	<b>-1,5%</b>	<b>8.901</b>	<b>9.038</b>	<b>-1,5%</b>
Number of calls	9.038	8.901	-137	-1,5%	8.901	9.038	-1,5%
GT	344.143.018	344.730.742	587.724	0,2%	344.730.742	344.143.018	0,2%
Average tonnes by vessel	7.303	7.410	107	1,5%	7.410	7.303	1,5%
<b>UTI</b>	<b>408.633</b>	<b>410.531</b>	<b>1.898</b>	<b>0,5%</b>	<b>410.531</b>	<b>408.633</b>	<b>0,5%</b>
Domestic	254.442	253.686	-756	-0,3%	253.686	254.442	-0,3%
% Full	66,1%	66,3%			66,3%	66,1%	
Foreign	154.191	156.845	2.655	1,7%	156.845	154.191	1,7%
% Full	93,9%	93,6%			93,6%	93,9%	

## TRAFFIC INDICATORS

Breakdown of total traffic (tonnes)	Monthly accumulated				% 19-18 accum. November	% 19-18 accum. October	% of total accum. 2019
	2018	2019	Diff. 19-18	%			
<b>Goods indicators by type of packaging (t)</b>	<b>66.003.759</b>	<b>65.958.084</b>	<b>-45.675</b>	<b>-0,1%</b>	<b>1,0%</b>	<b>1,5%</b>	<b>100%</b>
<b>Liquid bulk</b>	<b>15.313.543</b>	<b>16.132.219</b>	<b>818.676</b>	<b>5,3%</b>	<b>8,1%</b>	<b>8,7%</b>	<b>24,5%</b>
<b>Hydrocarbons</b>	<b>12.521.951</b>	<b>12.403.249</b>	<b>-118.702</b>	<b>-0,9%</b>	<b>1,4%</b>	<b>0,6%</b>	<b>18,8%</b>
Natural gas	4.161.176	4.038.618	-122.558	-2,9%	-1,2%	2,8%	6,1%
Petrol	3.694.388	3.646.633	-47.755	-1,3%	3,7%	4,6%	5,5%
Diesel oils	2.382.374	2.996.675	614.302	25,8%	32,6%	21,8%	4,5%
Fuel oil	2.178.060	1.531.581	-646.479	-29,7%	-32,3%	-32,5%	2,3%
Other petroleum products	87.678	99.145	11.466	13,1%	9,1%	60,2%	0,2%
Remainder	18.275	90.597	72.322	395,7%	436,1%	-3,9%	0,1%
<b>Other liquid bulk</b>	<b>2.791.591</b>	<b>3.728.970</b>	<b>937.379</b>	<b>33,6%</b>	<b>38,1%</b>	<b>46,6%</b>	<b>5,7%</b>
Biofuel	739.801	1.421.622	681.821	92,2%	115,6%	146,1%	2,2%
Chemical products	989.394	1.038.456	49.062	5,0%	2,0%	5,7%	1,6%
Oils and fats	712.306	881.478	169.173	23,8%	27,3%	32,7%	1,3%
Other petroleum products	256.355	273.012	16.657	6,5%	10,8%	9,4%	0,4%
Natural/artificial fertilizer	72.086	73.037	950	1,3%	2,1%	2,1%	0,1%
Remainder	21.650	41.366	19.716	91,1%	91,2%	47,6%	0,1%
<b>Dry bulk</b>	<b>4.224.718</b>	<b>4.071.384</b>	<b>-153.334</b>	<b>-3,6%</b>	<b>-2,1%</b>	<b>-2,9%</b>	<b>6,2%</b>
<b>Special installation</b>	<b>3.806.654</b>	<b>3.616.568</b>	<b>-190.086</b>	<b>-5,0%</b>	<b>-2,7%</b>	<b>-3,8%</b>	<b>5,5%</b>
Soya bean	1.392.481	1.341.306	-51.175	-3,7%	1,7%	0,6%	2,0%
Cement and clinker	1.207.338	1.069.854	-137.484	-11,4%	-8,3%	-6,3%	1,6%
Potashes	617.218	546.572	-70.646	-11,4%	-16,2%	-10,6%	0,8%
Cereals and flours	504.413	546.554	42.141	8,4%	10,2%	6,0%	0,8%
Feedstuffs and fodder	62.331	112.282	49.951	80,1%	85,1%	-13,3%	0,2%
Remainder	22.874	0	-22.874				0,0%
<b>Without special installation</b>	<b>418.063</b>	<b>454.816</b>	<b>36.752</b>	<b>8,8%</b>	<b>3,8%</b>	<b>6,2%</b>	<b>0,7%</b>
Scrap iron	191.236	211.518	20.282	10,6%	10,3%	13,7%	0,3%
Common salt	124.603	94.466	-30.137	-24,2%	-23,4%	-17,0%	0,1%
Other non-metallic minerals	63.055	73.118	10.063	16,0%	22,4%	14,4%	0,1%
Other minerals and metallic waste	30.770	40.620	9.850	32,0%	49,8%	54,8%	0,1%
Coal	0	32.999	32.999	0,0%	0,0%	0,0%	0,1%
Remainder	8.400	2.095	-6.305	-75,1%	-61,2%	-61,2%	0,0%
<b>General cargo</b>	<b>46.465.499</b>	<b>45.754.482</b>	<b>-711.017</b>	<b>-1,5%</b>	<b>-1,0%</b>	<b>-0,5%</b>	<b>69,4%</b>
<b>Containerized</b>	<b>34.913.786</b>	<b>34.182.740</b>	<b>-731.046</b>	<b>-2,1%</b>	<b>-1,1%</b>	<b>-0,6%</b>	<b>51,8%</b>
Tare of containers	7.043.314	6.833.874	-209.440	-3,0%	-1,7%	-0,6%	10,4%
Chemical products	5.174.674	5.111.628	-63.046	-1,2%	-1,8%	-1,6%	7,7%
Other cargo by type	3.522.788	3.376.514	-146.274	-4,2%	-3,7%	-4,8%	5,1%
Other food products	3.029.060	2.888.771	-140.289	-4,6%	-6,1%	-7,1%	4,4%
Paper and pulp	2.858.689	2.847.779	-10.910	-0,4%	0,8%	1,0%	4,3%
Remainder	13.285.260	13.124.175	-161.086	-1,2%	0,8%	2,1%	19,9%
<b>Non-containerized</b>	<b>11.551.713</b>	<b>11.571.741</b>	<b>20.029</b>	<b>0,2%</b>	<b>-0,4%</b>	<b>-0,3%</b>	<b>17,5%</b>
Tare of platform and wagons (Ro-Ro)	4.390.971	4.405.491	14.520	0,3%	-0,2%	-0,5%	6,7%
Other cargo by type	1.660.926	1.591.844	-69.082	-4,2%	-4,7%	-5,0%	2,4%
Automobiles and parts	1.339.179	1.287.498	-51.681	-3,9%	-4,1%	-2,5%	2,0%
Machinery and spare parts	1.050.314	1.115.462	65.148	6,2%	4,9%	3,2%	1,7%
Iron and steel products	814.194	852.668	38.474	4,7%	4,0%	11,0%	1,3%
Remainder	2.296.129	2.318.778	22.649	1,0%	0,3%	-0,9%	3,5%

## TRAFFIC INDICATORS

Breakdown of traffic in transit (tonnes)	Monthly accumulated				% 19-18 accum. November	% 19-18 accum. October	% of total accum. 2019
	2018	2019	Diff. 19-18	%			
<b>Goods indicators by type of packaging (t)</b>	<b>22.410.534</b>	<b>22.513.486</b>	<b>102.952</b>	<b>0,5%</b>	<b>2,3%</b>	<b>3,6%</b>	<b>100%</b>
<b>Liquid bulk</b>	<b>5.401.802</b>	<b>5.941.012</b>	<b>539.210</b>	<b>10,0%</b>	<b>14,1%</b>	<b>15,0%</b>	<b>26,4%</b>
<b>Hydrocarbons</b>	<b>4.608.908</b>	<b>4.702.394</b>	<b>93.486</b>	<b>2,0%</b>	<b>4,3%</b>	<b>2,6%</b>	<b>20,9%</b>
Petrol	2.898.386	2.711.307	-187.079	-6,5%	-0,9%	-1,5%	12,0%
Diesel oils	614.448	1.342.860	728.412	118,5%	132,9%	130,9%	6,0%
Fuel oil	985.816	553.865	-431.951	-43,8%	-45,9%	-50,1%	2,5%
Other petroleum products	41.143	80.646	39.503	96,0%	83,9%	83,9%	0,4%
Natural gas	69.115	13.716	-55.399	-80,2%	-80,2%	-80,2%	0,1%
Remainder	0	0	0				0,0%
<b>Other liquid bulk</b>	<b>792.894</b>	<b>1.238.618</b>	<b>445.724</b>	<b>56,2%</b>	<b>72,4%</b>	<b>99,2%</b>	<b>5,5%</b>
Biofuel	546.243	1.059.259	513.017	93,9%	126,5%	174,6%	4,7%
Chemical products	243.670	148.453	-95.217	-39,1%	-46,9%	-46,5%	0,7%
Other petroleum products	0	14.155	14.155				0,1%
Other cargo by type	0	12.292	12.292				0,1%
Crude oil	0	4.458	4.458				0,0%
Remainder	2.982	0	-2.982				0,0%
<b>Dry bulk</b>	<b>0</b>	<b>0</b>	<b>0</b>				<b>0,0%</b>
<b>Special installation</b>	<b>0</b>	<b>0</b>	<b>0</b>				<b>0,0%</b>
Remainder	0	0	0				0,0%
<b>Without special installation</b>	<b>0</b>	<b>0</b>	<b>0</b>				<b>0,0%</b>
Remainder	0	0	0				0,0%
<b>General cargo</b>	<b>17.008.732</b>	<b>16.572.474</b>	<b>-436.258</b>	<b>-2,6%</b>	<b>-1,3%</b>	<b>-0,2%</b>	<b>73,6%</b>
<b>Containerized</b>	<b>16.816.994</b>	<b>16.290.295</b>	<b>-526.699</b>	<b>-3,1%</b>	<b>-1,6%</b>	<b>-0,1%</b>	<b>72,4%</b>
Tare of containers	3.022.923	2.891.120	-131.803	-4,4%	-2,6%	-0,1%	12,8%
Chemical products	1.798.755	1.886.952	88.197	4,9%	3,3%	3,6%	8,4%
Other food products	2.050.476	1.687.830	-362.646	-17,7%	-19,7%	-19,2%	7,5%
Fruits, vegetables, pulses	1.326.375	1.546.825	220.450	16,6%	29,4%	38,1%	6,9%
Other cargo by type	1.389.499	1.397.544	8.045	0,6%	0,1%	-1,3%	6,2%
Remainder	7.228.966	6.880.024	-348.942	-4,8%	-3,0%	-1,7%	30,6%
<b>Non-containerized</b>	<b>191.738</b>	<b>282.179</b>	<b>90.441</b>	<b>47,2%</b>	<b>22,8%</b>	<b>-7,5%</b>	<b>1,3%</b>
Automobiles and parts	118.402	107.329	-11.073	-9,4%	-12,5%	-12,9%	0,5%
Machinery and spare parts	36.204	55.905	19.700	54,4%	39,2%	-6,0%	0,2%
Tare of platform and wagons (Ro-Ro)	9.682	38.370	28.688	296,3%	199,4%	49,6%	0,2%
Oils and fats	11.138	29.865	18.727	168,1%	70,6%	-3,6%	0,1%
Other cargo by type	8.325	19.460	11.135	133,8%	40,1%	-45,2%	0,1%
Remainder	7.986	31.251	23.264	291,3%	173,6%	31,5%	0,1%

## TRAFFIC INDICATORS

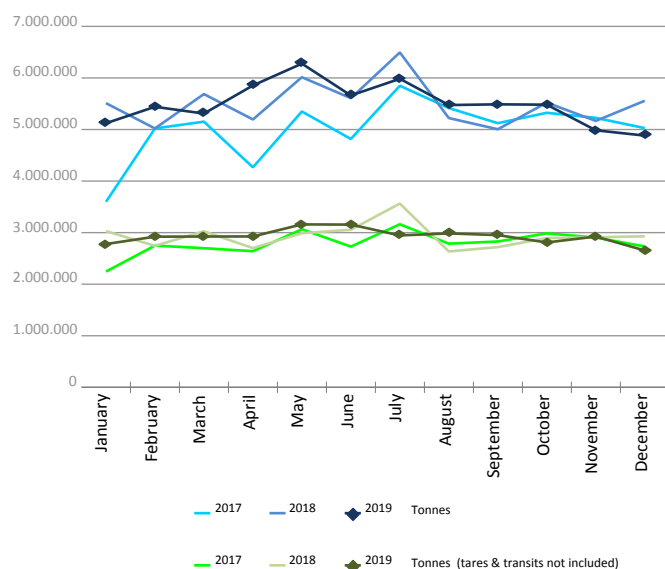
### Monthly evolution of traffic. Tonnes

Monthly evolution of traffic	Total tonnes			%		Tonnes (tares & transits not included)			%	
	2018	2019	Diff. 19-18	Monthly	Accumulated	2018	2019	Diff. 19-18	Monthly	Accumulated
January	5.511.325	5.121.636	-389.689	-7,1%	-7,1%	3.029.135	2.778.736	-250.399	-8,3%	-8,3%
February	5.020.190	5.440.292	420.102	8,4%	0,3%	2.743.948	2.921.635	177.686	6,5%	-1,3%
March	5.687.507	5.309.368	-378.140	-6,6%	-2,1%	3.025.510	2.924.838	-100.672	-3,3%	-2,0%
April	5.194.584	5.854.123	659.539	12,7%	1,5%	2.699.945	2.925.733	225.788	8,4%	0,5%
May	6.014.550	6.277.607	263.057	4,4%	2,1%	2.988.041	3.159.273	171.232	5,7%	1,5%
June	5.607.165	5.660.566	53.401	1,0%	1,9%	3.055.922	3.155.561	99.639	3,3%	1,8%
July	6.494.873	5.983.948	-510.925	-7,9%	0,3%	3.564.161	2.945.535	-618.626	-17,4%	-1,4%
August	5.222.045	5.474.237	252.192	4,8%	0,8%	2.634.490	2.984.720	350.230	13,3%	0,2%
September	5.004.956	5.488.465	483.510	9,7%	1,7%	2.718.859	2.952.074	233.215	8,6%	1,1%
October	5.521.570	5.481.301	-40.269	-0,7%	1,5%	2.893.984	2.808.654	-85.330	-2,9%	0,7%
November	5.167.176	4.984.965	-182.211	-3,5%	1,0%	2.909.075	2.923.812	14.737	0,5%	0,7%
December	5.557.817	4.881.576	-676.242	-12,2%	-0,1%	2.928.657	2.653.552	-275.105	-9,4%	-0,2%
<b>Total</b>	<b>66.003.759</b>	<b>65.958.084</b>				<b>35.191.729</b>	<b>35.134.125</b>			

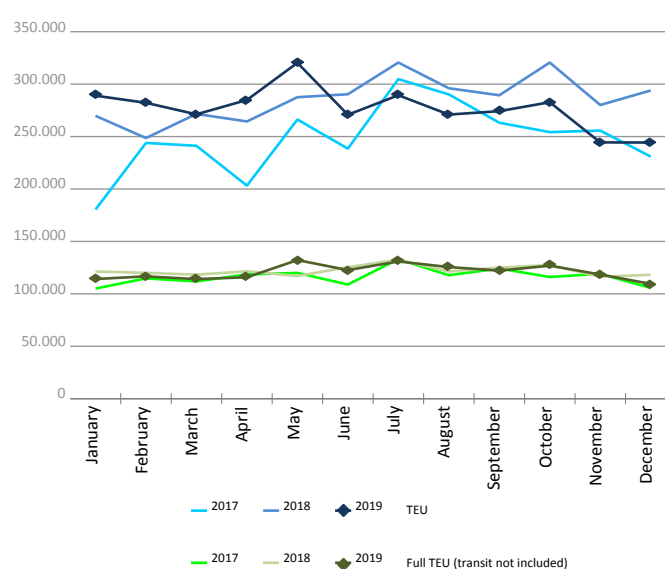
### Monthly evolution of traffic. TEU

Monthly evolution of traffic	Total TEU			%		Full TEU (transit not included)			%	
	2018	2019	Diff. 19-18	Monthly	Accumulated	2018	2019	Diff. 19-18	Monthly	Accumulated
January	269.780	289.014	19.234	7,1%	7,1%	121.377	114.140	-7.237	-6,0%	-6,0%
February	248.611	282.206	33.595	13,5%	10,2%	120.040	116.678	-3.362	-2,8%	-4,4%
March	271.559	271.217	-342	-0,1%	6,6%	118.328	114.084	-4.244	-3,6%	-4,1%
April	264.424	284.903	20.479	7,7%	6,9%	121.557	115.797	-5.761	-4,7%	-4,3%
May	287.571	320.327	32.756	11,4%	7,9%	117.007	132.187	15.180	13,0%	-0,9%
June	290.368	270.802	-19.566	-6,7%	5,3%	125.491	122.694	-2.797	-2,2%	-1,1%
July	320.609	289.432	-31.177	-9,7%	2,8%	132.617	130.907	-1.710	-1,3%	-1,2%
August	296.089	270.965	-25.124	-8,5%	1,3%	121.340	125.570	4.230	3,5%	-0,6%
September	289.411	274.244	-15.167	-5,2%	0,6%	124.998	122.141	-2.857	-2,3%	-0,8%
October	320.595	282.757	-37.838	-11,8%	-0,8%	127.551	126.873	-679	-0,5%	-0,8%
November	280.110	244.456	-35.654	-12,7%	-1,9%	116.285	118.482	2.197	1,9%	-0,5%
December	293.961	244.328	-49.634	-16,9%	-3,2%	118.185	109.494	-8.692	-7,4%	-1,1%
<b>Total</b>	<b>3.433.088</b>	<b>3.324.650</b>				<b>1.464.775</b>	<b>1.449.044</b>			

Goods (total tonnes)



Containers (total TEU)



# CONTAINER TRAFFIC

## TEU evolution

Full-unloaded foreign	Full TEU			%		Full-loaded foreign	Full TEU			%	
	2018	2019	Diff. 19-18	Monthly	Accumulated		2018	2019	Diff. 19-18	Monthly	Accumulated
January	49.160	54.669	5.509	11,2%	11,2%	January	62.062	49.622	-12.441	-20,0%	-20,0%
February	44.662	46.656	1.994	4,5%	8,0%	February	64.868	59.380	-5.488	-8,5%	-14,1%
March	41.918	45.335	3.417	8,2%	8,0%	March	63.752	56.014	-7.739	-12,1%	-13,5%
April	50.361	48.213	-2.148	-4,3%	4,7%	April	60.221	56.445	-3.777	-6,3%	-11,7%
May	50.333	54.834	4.502	8,9%	5,6%	May	54.887	64.864	9.977	18,2%	-6,4%
June	49.046	50.988	1.941	4,0%	5,3%	June	64.376	59.316	-5.060	-7,9%	-6,6%
July	55.642	53.090	-2.552	-4,6%	3,7%	July	65.991	65.388	-603	-0,9%	-5,8%
August	48.335	49.918	1.583	3,3%	3,7%	August	61.757	64.001	2.244	3,6%	-4,6%
September	56.793	48.300	-8.494	-15,0%	1,3%	September	57.819	63.700	5.880	10,2%	-3,1%
October	45.281	49.086	3.805	8,4%	1,9%	October	71.103	66.875	-4.228	-5,9%	-3,4%
November	43.989	44.313	324	0,7%	1,8%	November	60.968	62.321	1.352	2,2%	-2,9%
December	45.158	37.841	-7.317	-16,2%	0,4%	December	63.372	62.728	-644	-1,0%	-2,7%
<b>Total</b>	<b>580.676</b>	<b>583.240</b>				<b>Total</b>	<b>751.176</b>	<b>730.651</b>			

Full-unloaded domestic	Full TEU			%		Full-loaded domestic	Full TEU			%	
	2018	2019	Diff. 19-18	Monthly	Accumulated		2018	2019	Diff. 19-18	Monthly	Accumulated
January	2.063	2.246	183	8,9%	8,9%	January	8.092	7.604	-488	-6,0%	-6,0%
February	1.951	2.325	374	19,1%	13,9%	February	8.560	8.318	-242	-2,8%	-4,4%
March	2.336	2.290	-46	-2,0%	8,0%	March	10.322	10.446	124	1,2%	-2,2%
April	2.028	2.687	659	32,5%	14,0%	April	8.948	8.453	-495	-5,5%	-3,1%
May	2.343	2.802	459	19,6%	15,2%	May	9.445	9.687	243	2,6%	-1,9%
June	1.935	2.453	518	26,8%	17,0%	June	10.134	9.938	-196	-1,9%	-1,9%
July	1.819	2.474	655	36,0%	19,3%	July	9.166	9.956	791	8,6%	-0,4%
August	1.963	2.274	311	15,8%	18,9%	August	9.285	9.377	92	1,0%	-0,2%
September	1.848	1.956	108	5,8%	17,6%	September	8.538	8.186	-352	-4,1%	-0,6%
October	2.148	2.433	285	13,2%	17,1%	October	9.019	8.479	-540	-6,0%	-1,2%
November	2.159	1.976	-183	-8,5%	14,7%	November	9.170	9.873	704	7,7%	-0,4%
December	1.682	1.947	265	15,8%	14,8%	December	7.974	6.978	-996	-12,5%	-1,2%
<b>Total</b>	<b>24.274</b>	<b>27.859</b>				<b>Total</b>	<b>108.649</b>	<b>107.295</b>			

Full - Transit	Full TEU			%		Empty	Empty TEU			%	
	2018	2019	Diff. 19-18	Monthly	Accumulated		2018	2019	Diff. 19-18	Monthly	Accumulated
January	94.561	97.981	3.420	3,6%	3,6%	January	53.843	76.893	23.051	42,8%	42,8%
February	79.080	95.268	16.189	20,5%	11,3%	February	49.492	70.260	20.769	42,0%	42,4%
March	97.375	101.227	3.852	4,0%	8,7%	March	55.856	55.907	51	0,1%	27,6%
April	94.165	110.763	16.598	17,6%	11,0%	April	48.702	58.344	9.642	19,8%	25,7%
May	113.773	116.616	2.843	2,5%	9,0%	May	56.792	71.525	14.733	25,9%	25,8%
June	100.292	87.084	-13.208	-13,2%	5,1%	June	64.585	61.024	-3.561	-5,5%	19,6%
July	124.575	91.946	-32.629	-26,2%	-0,4%	July	63.417	66.580	3.163	5,0%	17,3%
August	105.296	79.968	-25.328	-24,1%	-3,5%	August	69.454	65.428	-4.026	-5,8%	13,8%
September	88.207	85.855	-2.353	-2,7%	-3,4%	September	76.206	66.249	-9.957	-13,1%	10,0%
October	109.040	88.745	-20.295	-18,6%	-5,1%	October	84.004	67.140	-16.864	-20,1%	5,9%
November	90.603	71.487	-19.116	-21,1%	-6,4%	November	73.222	54.488	-18.735	-25,6%	2,6%
December	100.455	76.585	-23.871	-23,8%	-7,8%	December	75.321	58.250	-17.072	-22,7%	0,2%
<b>Total</b>	<b>1.197.421</b>	<b>1.103.522</b>				<b>Total</b>	<b>770.892</b>	<b>772.085</b>			



# CONTAINER TRAFFIC

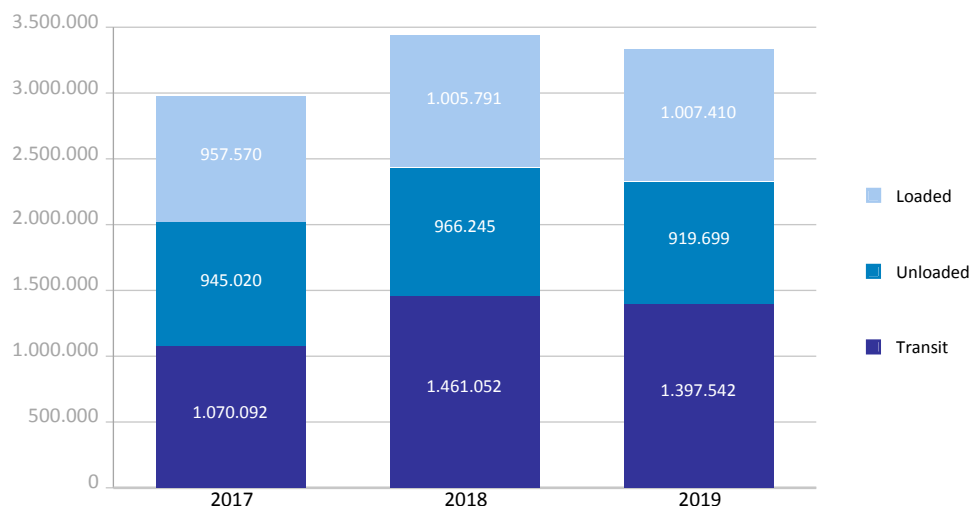
## TEU

Container traffic	Monthly accumulated 2018			Monthly accumulated 2019			%
	Domestic	Foreign	Total	Domestic	Foreign	Total	
<b>Total traffic</b>	<b>238.576</b>	<b>3.194.512</b>	<b>3.433.088</b>	<b>233.304</b>	<b>3.091.346</b>	<b>3.324.650</b>	<b>-3,2%</b>
<b>Unloaded</b>	<b>119.126</b>	<b>1.596.718</b>	<b>1.715.844</b>	<b>116.014</b>	<b>1.537.502</b>	<b>1.653.516</b>	<b>-3,6%</b>
Roll On-Roll Off	28.291	15.085	43.376	29.577	11.680	41.257	-4,9%
Lift On-Lift Off	90.835	1.581.633	1.672.468	86.438	1.525.822	1.612.259	-3,6%
<b>Loaded</b>	<b>119.450</b>	<b>1.597.794</b>	<b>1.717.244</b>	<b>117.290</b>	<b>1.553.845</b>	<b>1.671.134</b>	<b>-2,7%</b>
Roll On-Roll Off	35.984	16.036	52.020	34.816	13.281	48.097	-7,5%
Lift On-Lift Off	83.467	1.581.758	1.665.224	82.474	1.540.564	1.623.037	-2,5%

Breakdown by navigation and operation	Monthly accumulated 2018			Monthly accumulated 2019			%
	Domestic	Foreign	Total	Domestic	Foreign	Total	
<b>Loaded</b>	<b>119.311</b>	<b>886.481</b>	<b>1.005.791</b>	<b>117.245</b>	<b>890.165</b>	<b>1.007.410</b>	<b>0,2%</b>
Full	108.649	751.176	859.825	107.295	730.651	837.945	-2,5%
Empty	10.662	135.305	145.966	9.950	159.515	169.465	16,1%
<b>Unloaded</b>	<b>117.069</b>	<b>849.176</b>	<b>966.245</b>	<b>114.578</b>	<b>805.121</b>	<b>919.699</b>	<b>-4,8%</b>
Full	24.274	580.676	604.950	27.859	583.240	611.099	1,0%
Empty	92.795	268.500	361.295	86.719	221.881	308.600	-14,6%
<b>Transit</b>	<b>2.197</b>	<b>1.458.855</b>	<b>1.461.052</b>	<b>1.481</b>	<b>1.396.061</b>	<b>1.397.542</b>	<b>-4,3%</b>
Full	202	1.197.220	1.197.421	65	1.103.457	1.103.522	-7,8%
Empty	1.996	261.635	263.631	1.416	292.604	294.020	11,5%

<b>Total traffic</b>	<b>238.576</b>	<b>3.194.512</b>	<b>3.433.088</b>	<b>233.304</b>	<b>3.091.346</b>	<b>3.324.650</b>	<b>-3,2%</b>
Full	133.124	2.529.073	2.662.197	135.219	2.417.347	2.552.565	-4,1%
Empty	105.452	665.440	770.892	98.085	674.000	772.085	0,2%
% Empty	44,2%	20,8%	<b>22,5%</b>	42,0%	21,8%	<b>23,2%</b>	
% Transit	0,9%	45,7%	<b>42,6%</b>	0,6%	45,2%	<b>42,0%</b>	

General cargo distribution by operation (TEU )

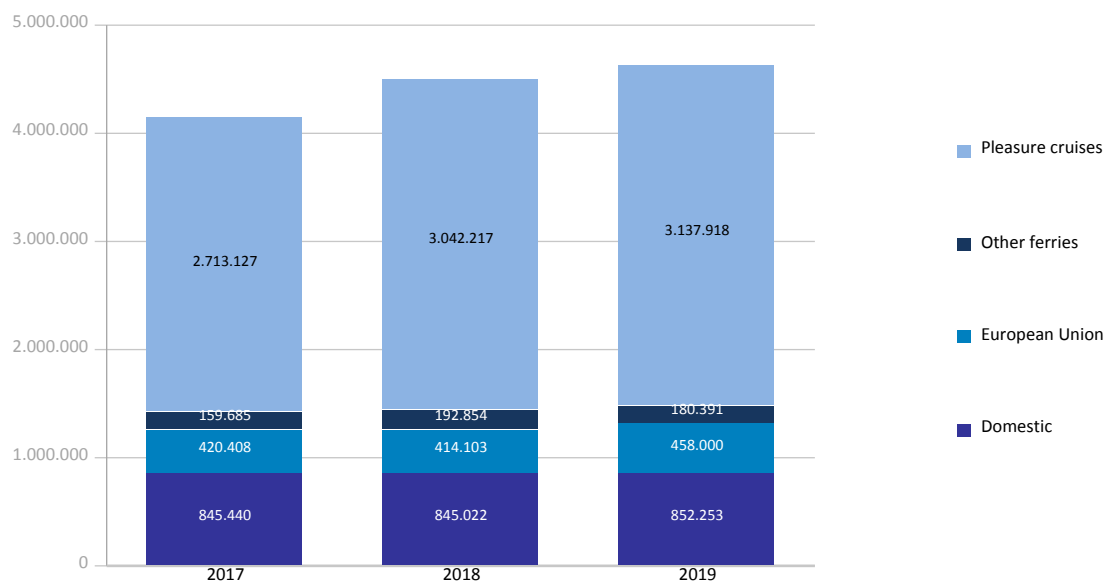


## PASSENGER TRAFFIC

Total passenger traffic (units)	Monthly accumulated				% 19-18 accum. November	% 19-18 accum. October
	2018	2019	Diff. 19-18	%		
<b>Total passengers</b>	<b>4.494.196</b>	<b>4.628.562</b>	<b>134.366</b>	<b>3,0%</b>	<b>3,7%</b>	<b>3,1%</b>
Embarkation	1.566.778	1.629.638	62.860	4,0%	4,9%	3,7%
Disembarkation	1.552.224	1.614.228	62.004	4,0%	5,1%	4,1%
Transit	1.375.194	1.384.696	9.502	0,7%	0,9%	1,0%
<b>Regular line ferries</b>	<b>1.451.979</b>	<b>1.490.644</b>	<b>38.665</b>	<b>2,7%</b>	<b>3,3%</b>	<b>3,4%</b>
Embarkation	731.792	752.016	20.224	2,8%	3,3%	3,5%
Disembarkation	720.187	738.628	18.441	2,6%	3,2%	3,3%
<b>Domestic</b>	845.022	852.253	7.231	0,9%	1,3%	1,8%
Embarkation	433.936	439.707	5.771	1,3%	1,8%	2,3%
Disembarkation	411.086	412.546	1.460	0,4%	0,7%	1,3%
<b>European Union</b>	414.103	458.000	43.897	10,6%	11,8%	11,6%
Embarkation	201.739	222.910	21.171	10,5%	11,2%	11,4%
Disembarkation	212.364	235.090	22.726	10,7%	12,3%	11,9%
<b>Other ferries</b>	192.854	180.391	-12.463	-6,5%	-6,7%	-7,8%
Embarkation	96.117	89.399	-6.718	-7,0%	-6,9%	-8,2%
Disembarkation	96.737	90.992	-5.745	-5,9%	-6,5%	-7,4%
<b>Pleasure cruises</b>	<b>3.042.217</b>	<b>3.137.918</b>	<b>95.701</b>	<b>3,1%</b>	<b>3,9%</b>	<b>2,9%</b>
Embarkation	834.986	877.622	42.636	5,1%	6,3%	3,9%
Disembarkation	832.037	875.600	43.563	5,2%	6,6%	4,8%
Transit	1.375.194	1.384.696	9.502	0,7%	0,9%	1,0%

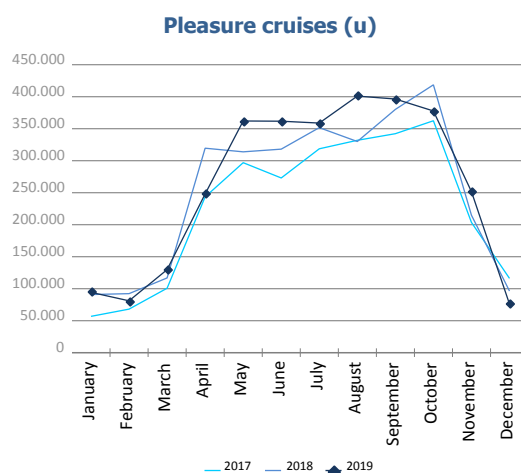
Total passenger calls (units)	Monthly accumulated				% 19-18 accum. November	% 19-18 accum. October
	2018	2019	Diff. 19-18	%		
<b>Total number of calls</b>	<b>4.219</b>	<b>4.060</b>	<b>-159</b>	<b>-3,8%</b>	<b>-4,0%</b>	<b>-4,5%</b>
<b>Regular Line ferries</b>	3.389	3.260	-129	-3,8%	-4,3%	-4,6%
<b>Pleasure cruises</b>	830	800	-30	-3,6%	-3,0%	-4,1%

Passenger traffic distribution (u)

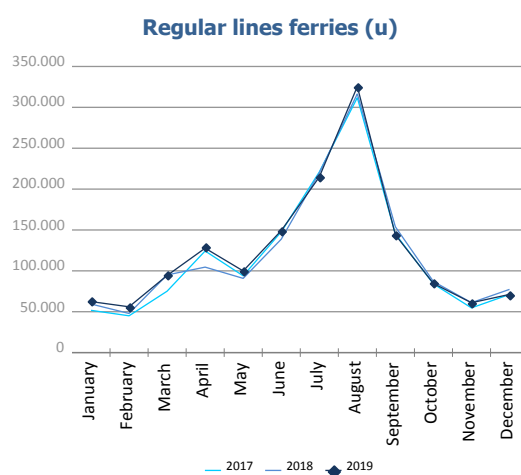


## PASSENGER CLASSIFICATION

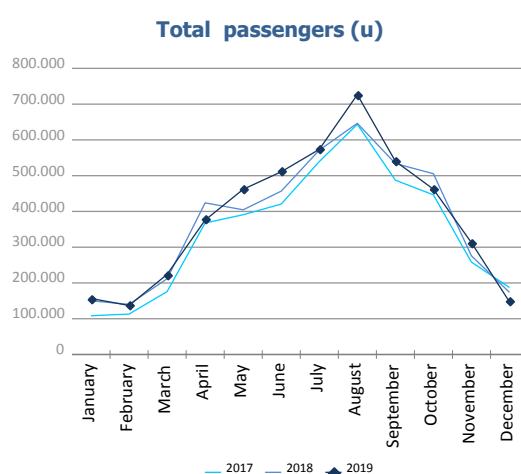
Monthly evolution of passenger traffic	Pleasure cruises			%	
	2018	2019	Diff. 19-18	Monthly	Accumulated
January	90.812	94.262	3.450	3,8%	3,8%
February	92.210	81.022	-11.188	-12,1%	-4,2%
March	116.763	129.666	12.903	11,1%	1,7%
April	319.490	247.989	-71.501	-22,4%	-10,7%
May	313.810	362.020	48.210	15,4%	-1,9%
June	318.025	361.663	43.638	13,7%	2,0%
July	351.600	358.760	7.160	2,0%	2,0%
August	329.924	400.914	70.990	21,5%	5,4%
September	380.104	396.341	16.237	4,3%	5,2%
October	418.492	377.660	-40.832	-9,8%	2,9%
November	214.738	251.670	36.932	17,2%	3,9%
December	96.249	75.951	-20.298	-21,1%	3,1%
<b>Total</b>	<b>3.042.217</b>	<b>3.137.918</b>			



Monthly evolution of passenger traffic	Regular lines ferries			%	
	2018	2019	Diff. 19-18	Monthly	Accumulated
January	59.460	62.397	2.937	4,9%	4,9%
February	47.869	56.020	8.151	17,0%	10,3%
March	94.984	94.338	-646	-0,7%	5,2%
April	104.550	127.725	23.175	22,2%	11,0%
May	90.775	99.897	9.122	10,0%	10,7%
June	138.710	149.183	10.473	7,6%	9,9%
July	219.735	214.776	-4.959	-2,3%	6,4%
August	316.565	325.482	8.917	2,8%	5,3%
September	153.917	144.082	-9.835	-6,4%	3,9%
October	87.001	84.565	-2.436	-2,8%	3,4%
November	61.086	61.002	-84	-0,1%	3,3%
December	77.327	71.177	-6.150	-8,0%	2,7%
<b>Total</b>	<b>1.451.979</b>	<b>1.490.644</b>			



Monthly evolution of passenger traffic	Total passengers			%	
	2018	2019	Diff. 19-18	Monthly	Accumulated
January	150.272	156.659	6.387	4,3%	4,3%
February	140.079	137.042	-3.037	-2,2%	1,2%
March	211.747	224.004	12.257	5,8%	3,1%
April	424.040	375.714	-48.326	-11,4%	-3,5%
May	404.585	461.917	57.332	14,2%	1,8%
June	456.735	510.846	54.111	11,8%	4,4%
July	571.335	573.536	2.201	0,4%	3,4%
August	646.489	726.396	79.907	12,4%	5,4%
September	534.021	540.423	6.402	1,2%	4,7%
October	505.493	462.225	-43.268	-8,6%	3,1%
November	275.824	312.672	36.848	13,4%	3,7%
December	173.576	147.128	-26.448	-15,2%	3,0%
<b>Total</b>	<b>4.494.196</b>	<b>4.628.562</b>			

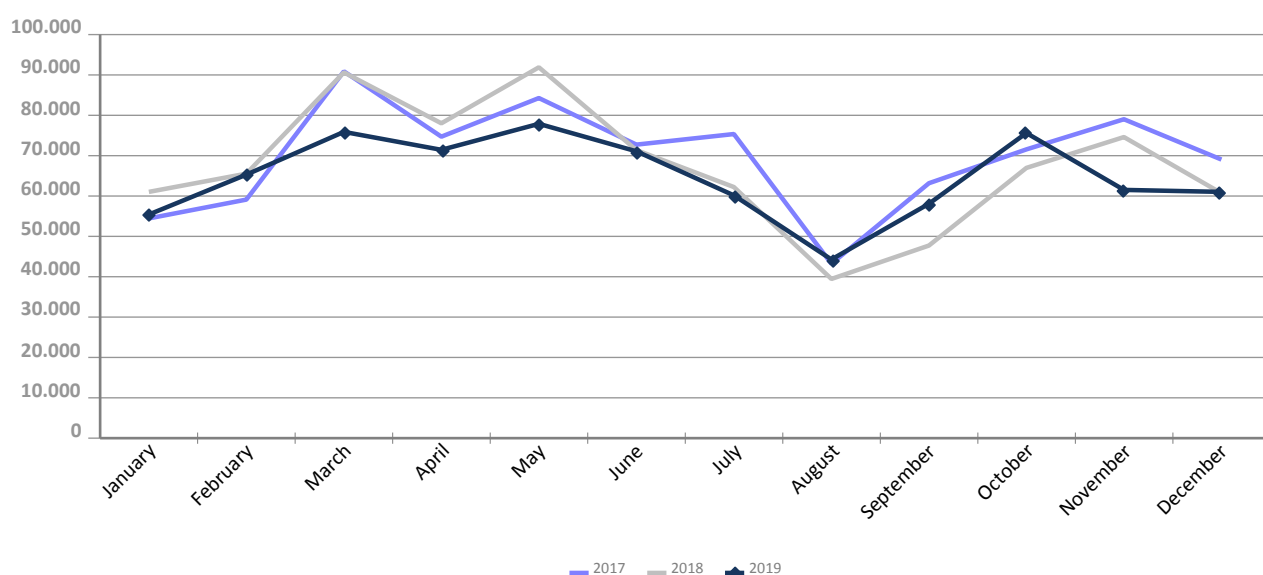


## AUTOMOBILE TRAFFIC

Total automobile traffic (units)	Monthly accumulated				% 19-18 accum. November	% 19-18 accum. October
	2018	2019	Diff. 19-18	%		
<b>Automobile traffic by navigation and operation</b>	<b>810.172</b>	<b>777.688</b>	<b>-32.484</b>	<b>-4,0%</b>	<b>-4,4%</b>	<b>-2,9%</b>
<b>Domestic</b>	<b>138.769</b>	<b>132.062</b>	<b>-6.707</b>	<b>-4,8%</b>	<b>-3,9%</b>	<b>-2,5%</b>
Loaded	108.316	99.908	-8.408	-7,8%	-6,6%	-4,8%
Unloaded	30.447	32.096	1.649	5,4%	5,8%	7,8%
Transit	6	58	52	866,7%		
<b>Foreign</b>	<b>671.403</b>	<b>645.626</b>	<b>-25.777</b>	<b>-3,8%</b>	<b>-4,5%</b>	<b>-3,0%</b>
Loaded	390.158	377.777	-12.381	-3,2%	-4,2%	-3,4%
Unloaded	201.000	201.197	197	0,1%	0,4%	2,8%
Transit	80.245	66.652	-13.593	-16,9%	-18,0%	-15,4%

Monthly automobile traffic (u)	Monthly		Accumulated		%	
	2018	2019	2018	2019	Monthly	Accumulated
January	61.026	55.418	61.026	55.418	-9,2%	-9,2%
February	65.538	65.297	126.564	120.715	-0,4%	-4,6%
March	90.640	75.896	217.204	196.611	-16,3%	-9,5%
April	78.020	71.443	295.224	268.054	-8,4%	-9,2%
May	91.891	77.885	387.115	345.939	-15,2%	-10,6%
June	71.385	71.077	458.500	417.016	-0,4%	-9,0%
July	62.224	60.155	520.724	477.171	-3,3%	-8,4%
August	39.451	44.276	560.175	521.447	12,2%	-6,9%
September	47.725	58.086	607.900	579.533	21,7%	-4,7%
October	66.969	75.614	674.869	655.147	12,9%	-2,9%
November	74.607	61.514	749.476	716.661	-17,5%	-4,4%
December	60.696	61.027	810.172	777.688	0,5%	-4,0%

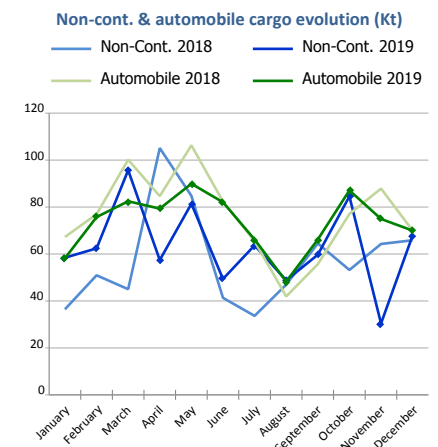
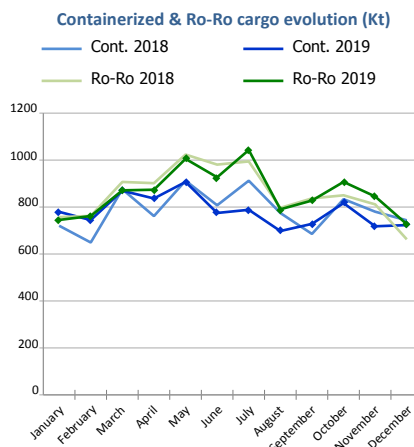
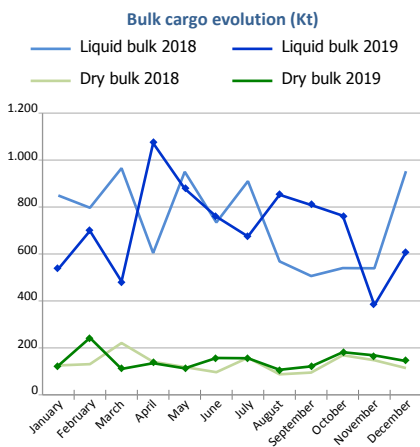
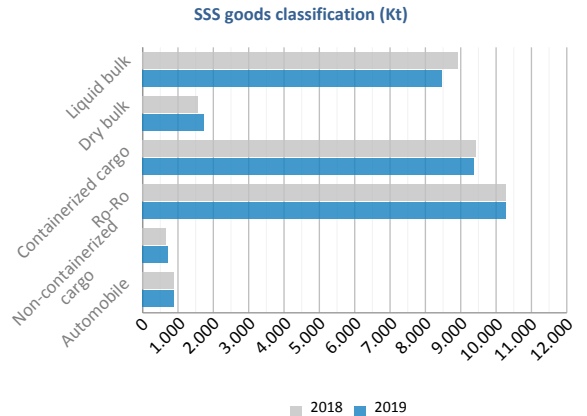
Evolution of monthly automobile traffic (u)



# SHORT SEA SHIPPING (SSS)

## SSS Goods classification

Goods classification. Tonnes	Monthly accumulated		%	% of total port traffic
	2018	2019		
Liquid bulk	8.916.714	8.515.161	-4,5%	52,8%
Dry bulk	1.601.417	1.758.281	9,8%	43,2%
Containerized cargo	9.457.046	9.384.895	-0,8%	28,1%
Ro-Ro	10.285.050	10.325.071	0,4%	99,5%
Non-containerized cargo	692.068	759.743	9,8%	89,4%
Automobile	915.708	880.449	-3,9%	81,2%
<b>Total</b>	<b>31.868.003</b>	<b>31.623.600</b>	<b>-0,8%</b>	<b>47,9%</b>



SSS General Cargo	Spanish Islands			SSS Remainder			TOTAL		
	2018	2019	%	2018	2019	%	2018	2019	%
<b>Containerized cargo</b>	968.717	961.468	-0,7%	8.488.330	8.423.427	-0,8%	<b>9.457.046</b>	<b>9.384.895</b>	<b>-0,8%</b>
O/D	940.229	946.987	0,7%	3.634.268	3.405.903	-6,3%	<b>4.574.497</b>	<b>4.352.890</b>	<b>-4,8%</b>
Transit	28.488	14.481	-49,2%	4.854.061	5.017.524	3,4%	<b>4.882.549</b>	<b>5.032.005</b>	<b>3,1%</b>
<b>Ro-Ro</b>	5.830.988	5.861.239	0,5%	4.454.062	4.463.832	0,2%	<b>10.285.050</b>	<b>10.325.071</b>	<b>0,4%</b>
O/D	5.830.988	5.861.239	0,5%	4.409.599	4.297.769	-2,5%	<b>10.240.587</b>	<b>10.159.009</b>	<b>-0,8%</b>
Transit	0	0	0,0%	44.463	166.063	273,5%	<b>44.463</b>	<b>166.063</b>	<b>273,5%</b>
<b>Non-cont. cargo</b>	5.215	3.546	-32,0%	686.853	756.197	10,1%	<b>692.068</b>	<b>759.743</b>	<b>9,8%</b>
O/D	5.068	3.340	-34,1%	670.180	744.797	11,1%	<b>675.248</b>	<b>748.138</b>	<b>10,8%</b>
Transit	147	206	39,5%	16.673	11.400	-31,6%	<b>16.820</b>	<b>11.605</b>	<b>-31,0%</b>
<b>Automobile</b>	193.849	189.390	-2,3%	721.860	691.059	-4,3%	<b>915.708</b>	<b>880.449</b>	<b>-3,9%</b>
O/D	193.136	188.592	-2,4%	640.344	621.381	-3,0%	<b>833.480</b>	<b>809.974</b>	<b>-2,8%</b>
Transit	712	798	12,0%	81.516	69.678	-14,5%	<b>82.228</b>	<b>70.476</b>	<b>-14,3%</b>



### Short Sea Shipping (SSS):

The transport of cargo/goods and passengers between ports situated in the European Union or between these ports and non-European ports with a coastline in seas bordering Europe. This applies to cargo either originating from or is destined for these countries (in accordance with the European Shortsea Network).

### Motorways of the sea (MoS):

Short Sea Shipping services as an alternative to road transport and which fulfill the following criteria: minimum frequency of 3 calls per week and calling at a maximum of 3 different ports.

### General cargo:

Including containerized cargo, non-containerized cargo, Ro-Ro and automobiles.

### Containerized cargo:

Excluding container cargo by Ro-Ro.

### Non-containerized cargo:

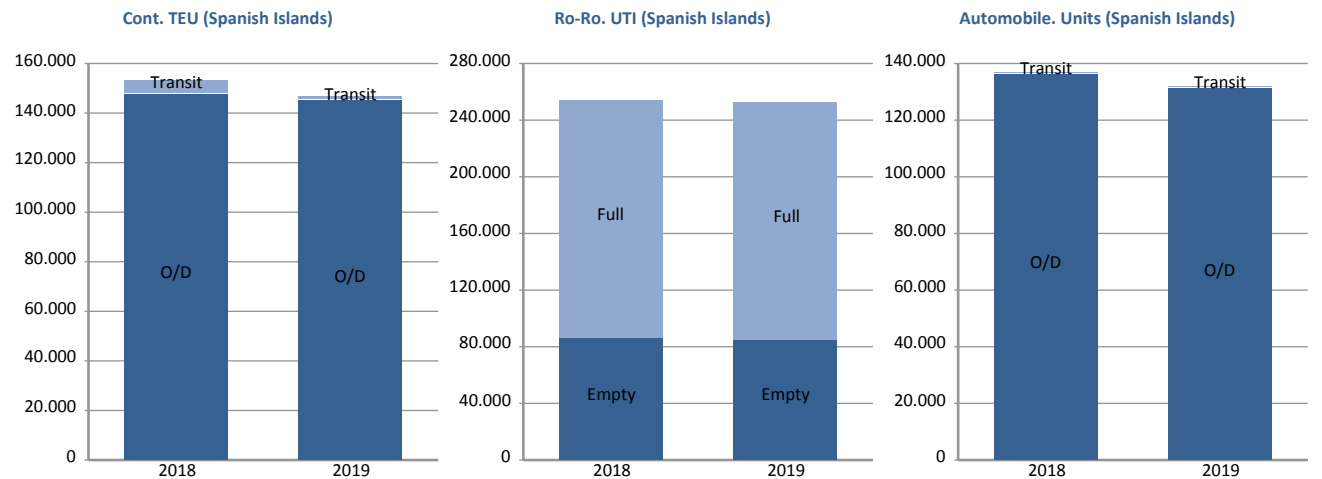
General non-containerized goods other than Ro-Ro and excluding automobiles.

### Ro-Ro:

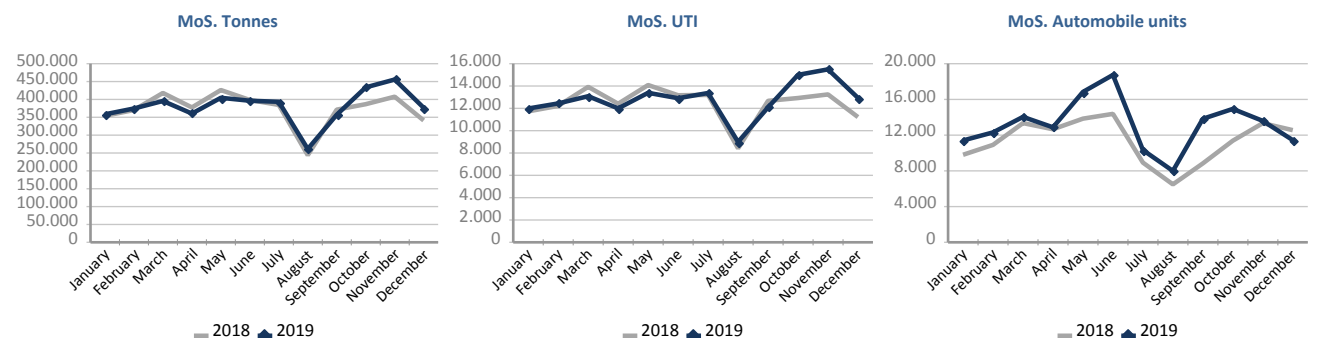
General cargo carried in UTI's. Excluding automobiles.

# SHORT SEA SHIPPING (SSS)

SSS General cargo	Spanish Islands			SSS Remainder			TOTAL		
	2018	2019	%	2018	2019	%	2018	2019	%
<b>Containerized cargo. TEU</b>	152.915	146.831	-4,0%	863.856	821.532	-4,9%	<b>1.016.771</b>	<b>968.363</b>	<b>-4,8%</b>
<b>O/D</b>	147.948	144.935	-2,0%	408.989	379.330	-7,3%	<b>556.937</b>	<b>524.265</b>	<b>-5,9%</b>
Full	89.659	90.211	0,6%	270.680	254.764	-5,9%	<b>360.339</b>	<b>344.975</b>	<b>-4,3%</b>
Empty	58.289	54.724	-6,1%	138.310	124.567	-9,9%	<b>196.598</b>	<b>179.290</b>	<b>-8,8%</b>
<b>Transit</b>	4.968	1.896	-61,8%	454.866	442.202	-2,8%	<b>459.834</b>	<b>444.098</b>	<b>-3,4%</b>
Full	1.659	1.189	-28,3%	379.544	368.001	-3,0%	<b>381.203</b>	<b>369.190</b>	<b>-3,2%</b>
Empty	3.309	707	-78,6%	75.322	74.202	-1,5%	<b>78.631</b>	<b>74.909</b>	<b>-4,7%</b>
<b>Ro-Ro. UTI</b>	253.996	252.860	-0,4%	154.045	157.210	2,1%	<b>408.041</b>	<b>410.070</b>	<b>0,5%</b>
Full	168.067	168.205	0,1%	144.313	146.497	1,5%	<b>312.380</b>	<b>314.702</b>	<b>0,7%</b>
Empty	85.929	84.655	-1,5%	9.732	10.713	10,1%	<b>95.661</b>	<b>95.368</b>	<b>-0,3%</b>
<b>Automobile units</b>	136.839	131.774	-3,7%	506.268	500.778	-1,1%	<b>643.107</b>	<b>632.552</b>	<b>-1,6%</b>
<b>O/D</b>	136.242	131.123	-3,8%	449.190	451.847	0,6%	<b>585.432</b>	<b>582.970</b>	<b>-0,4%</b>
<b>Transit</b>	597	651	9,0%	57.078	48.931	-14,3%	<b>57.675</b>	<b>49.582</b>	<b>-14,0%</b>



Motorways of the Sea (MoS)	EU			Non-EU			TOTAL		
	2018	2019	%	2018	2019	%	2018	2019	%
<b>Tonnes</b>	4.458.659	4.550.872	2,1%	21.223	16.819	-20,7%	<b>4.479.882</b>	<b>4.567.691</b>	<b>2,0%</b>
Loaded	2.351.277	2.432.394	3,4%	14.537	11.157	-23,3%	<b>2.365.813</b>	<b>2.443.550</b>	<b>3,3%</b>
Unloaded	2.107.383	2.118.478	0,5%	6.686	5.663	-15,3%	<b>2.114.069</b>	<b>2.124.140</b>	<b>0,5%</b>
<b>UTI</b>	148.318	153.010	3,2%	910	682	-25,1%	<b>149.228</b>	<b>153.692</b>	<b>3,0%</b>
Loaded	75.414	78.147	3,6%	539	399	-26,0%	<b>75.953</b>	<b>78.546</b>	<b>3,4%</b>
Unloaded	72.904	74.863	2,7%	371	283	-23,7%	<b>73.275</b>	<b>75.146</b>	<b>2,6%</b>
<b>Automobile units</b>	134.993	157.392	16,6%	1.485	951	-36,0%	<b>136.478</b>	<b>158.343</b>	<b>16,0%</b>
Loaded	121.024	143.779	18,8%	1.483	948	-36,1%	<b>122.507</b>	<b>144.727</b>	<b>18,1%</b>
Unloaded	13.969	13.613	-2,5%	2	3	50,0%	<b>13.971</b>	<b>13.616</b>	<b>-2,5%</b>

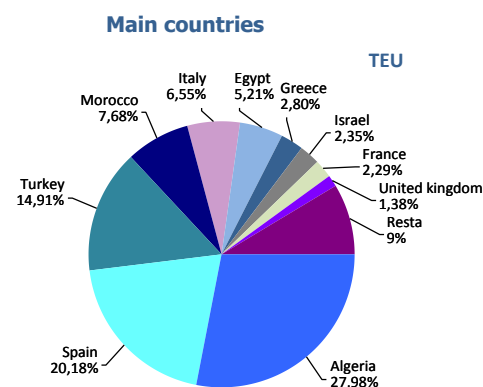


**UTI**: All those means of unitization, self-propelled or otherwise, that are directly or indirectly used as a means of land transport (e.g. trailers, platforms, trucks, freezer trucks, etc.) are considered as UTI. Containers are not considered to be included, except those that are handled by an equipment transport of the own terminal.

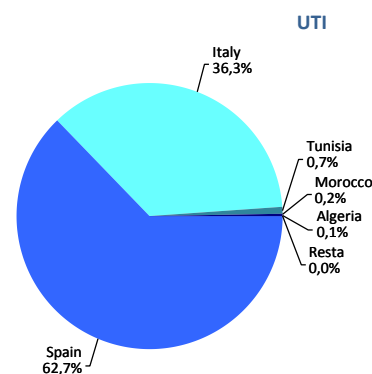
## SHORT SEA SHIPPING (SSS)

### SSS Ranking countries by mode of packaging

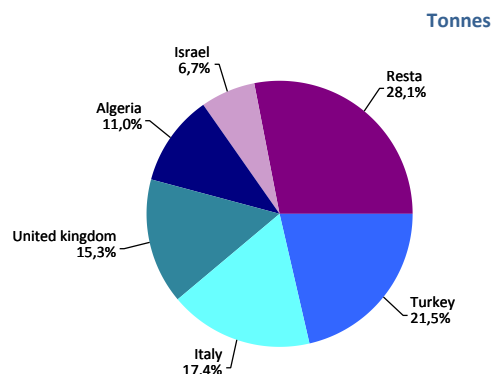
Containerized cargo. TEU	Monthly accumulated				% of total 2019
	2018	2019	Diff. 19-18	%	
<b>Total</b>	<b>1.016.771</b>	<b>968.363</b>	<b>-48.408</b>	<b>-4,8%</b>	<b>100%</b>
Algeria	304.937	270.928	-34.009	-11,2%	28,0%
Spain	203.533	195.455	-8.077	-4,0%	20,2%
Turkey	101.756	144.408	42.653	41,9%	14,9%
Morocco	78.367	74.392	-3.975	-5,1%	7,7%
Italy	64.656	63.411	-1.244	-1,9%	6,5%
Egypt	43.511	50.478	6.968	16,0%	5,2%
Greece	29.822	27.101	-2.721	-9,1%	2,8%
Israel	26.239	22.771	-3.468	-13,2%	2,4%
France	33.257	22.192	-11.065	-33,3%	2,3%
United kingdom	8.445	13.358	4.913	58,2%	1,4%
Remainder	122.251	83.870	-38.382	-31,4%	8,7%



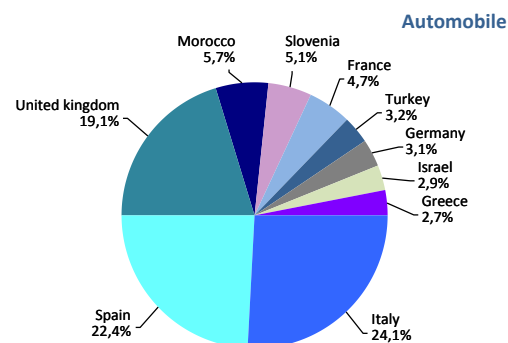
Ro-Ro. UTI	Monthly accumulated				% of total 2019
	2018	2019	Diff. 19-18	%	
<b>Total</b>	<b>408.041</b>	<b>410.070</b>	<b>2.029</b>	<b>0,5%</b>	<b>100%</b>
Spain	255.147	257.011	1.864	0,7%	62,7%
Italy	147.167	148.936	1.769	1,2%	36,3%
Tunisia	3.337	2.917	-420	-12,6%	0,7%
Morocco	899	689	-210	-23,4%	0,2%
Algeria	1.364	448	-916	-67,2%	0,1%
Remainder	127	69	-58	-45,7%	0,0%



Non-cont. cargo. Tonnes	Monthly accumulated				% of total 2019
	2018	2019	Diff. 19-18	%	
<b>Total</b>	<b>692.068</b>	<b>759.743</b>	<b>67.674</b>	<b>9,8%</b>	<b>100%</b>
Turkey	96.446	163.239	66.793	69,3%	21,5%
Italy	214.239	132.521	-81.717	-38,1%	17,4%
United kingdom	97.542	115.950	18.408	18,9%	15,3%
Algeria	57.467	83.798	26.331	45,8%	11,0%
Israel	33.675	51.056	17.381	51,6%	6,7%
Remainder	192.700	213.178	20.478	10,6%	28,1%



Automobile. Units	Monthly accumulated				% of total 2019
	2018	2019	Diff. 19-18	%	
<b>Total</b>	<b>643.107</b>	<b>632.552</b>	<b>-10.555</b>	<b>-1,6%</b>	<b>100%</b>
Italy	138.243	152.249	14.006	10,1%	24,1%
Spain	151.671	141.993	-9.678	-6,4%	22,4%
United kingdom	105.028	120.520	15.492	14,8%	19,1%
Morocco	36.014	36.258	244	0,7%	5,7%
Slovenia	33.909	32.211	-1.698	-5,0%	5,1%
France	21.416	29.895	8.479	39,6%	4,7%
Turkey	32.866	20.223	-12.643	-38,5%	3,2%
Germany	32.275	19.871	-12.404	-38,4%	3,1%
Israel	17.980	18.497	517	2,9%	2,9%
Greece	15.249	17.386	2.137	14,0%	2,7%
Remainder	58.456	43.449	-15.007	-25,7%	6,9%



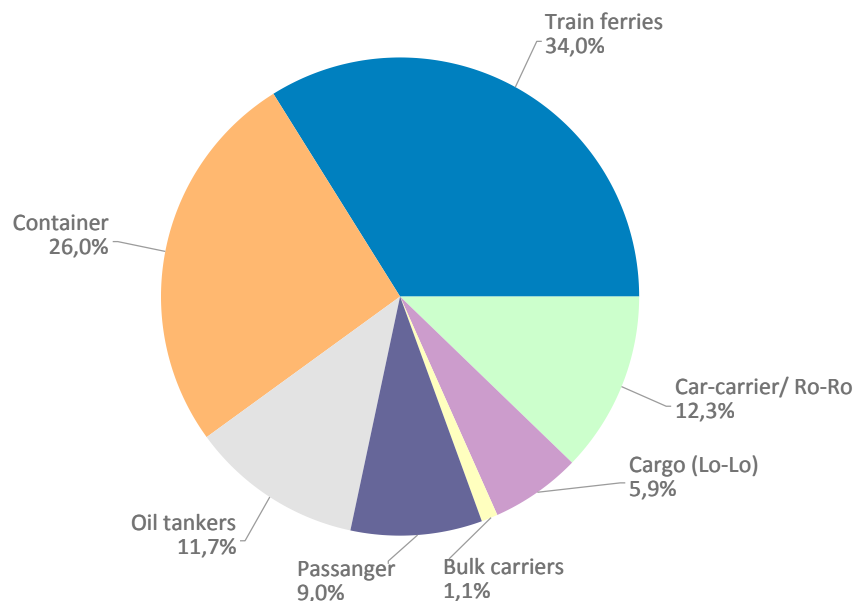
## VESSELS TRAFFIC

Vessels traffic	Monthly accumulated		
	2018	2019	%
Number of calls	9.038	8.901	-1,5%
Tonnage	344.143.018	344.730.742	0,2%
Average tonnes	38.077	38.729	1,7%

Type of vessels	Monthly accumulated					
	2018		2019		%	
	Calls	GT	Calls	GT	Calls	GT
<b>Total</b>	<b>9.038</b>	<b>344.143.018</b>	<b>8.901</b>	<b>344.730.742</b>	<b>-1,5%</b>	<b>0,2%</b>
Car-carrier/ Ro-Ro	1.199	43.384.797	1.094	40.847.477	-8,8%	-5,8%
Cargo (Lo-Lo)	554	2.653.253	529	2.352.643	-4,5%	-11,3%
Refrigerators	0	0	0	0		
Bulk carriers	108	3.352.654	98	2.873.614	-9,3%	-14,3%
Passanger	829	80.017.798	800	80.972.580	-3,5%	1,2%
Oil tankers	971	19.239.261	1.042	20.248.386	7,3%	5,2%
Container	2.337	105.964.306	2.313	106.629.740	-1,0%	0,6%
Train ferries	3.040	89.530.949	3.025	90.806.302	-0,5%	1,4%

Type of vessels (monthly accumulated 2019)	Domestic		Foreign	
	Calls	GT	Calls	GT
<b>Total</b>	<b>2.730</b>	<b>68.495.011</b>	<b>6.171</b>	<b>276.235.731</b>
Car-carrier/ Ro-Ro	79	1.419.540	1.015	39.427.937
Cargo (Lo-Lo)	21	122.983	508	2.229.660
Refrigerators	0	0	0	0
Bulk carriers	0	0	98	2.873.614
Passanger	104	6.688.648	696	74.283.932
Oil tankers	61	632.630	981	19.615.756
Container	259	3.000.911	2.054	103.628.829
Train ferries	2.206	56.630.299	819	34.176.003

Distribution by type of vessel

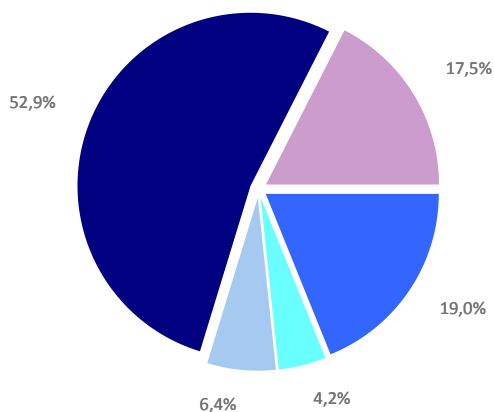




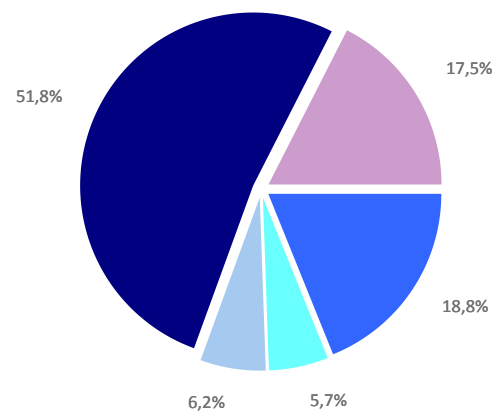
# GOODS TRAFFIC

Type of packaging and navigation	Monthly accumulated 2018			Monthly accumulated 2019			%
	Domestic	Foreign	Total	Domestic	Foreign	Total	
<b>Hydrocarbons</b>	<b>1.300.070</b>	<b>11.221.881</b>	<b>12.521.951</b>	<b>1.069.912</b>	<b>11.333.337</b>	<b>12.403.249</b>	<b>-0,9%</b>
Incoming	1.291.096	8.771.808	<b>10.062.903</b>	1.048.346	9.124.408	<b>10.172.754</b>	1,1%
Outgoing	8.974	2.450.073	<b>2.459.048</b>	21.566	2.208.929	<b>2.230.495</b>	-9,3%
<b>Other liquid bulk</b>	<b>240.613</b>	<b>2.550.978</b>	<b>2.791.591</b>	<b>395.475</b>	<b>3.333.495</b>	<b>3.728.970</b>	<b>33,6%</b>
Incoming	177.585	1.992.949	<b>2.170.533</b>	275.956	2.522.615	<b>2.798.571</b>	28,9%
Outgoing	63.029	558.029	<b>621.058</b>	119.519	810.880	<b>930.399</b>	49,8%
<b>Dry bulk</b>	<b>156.134</b>	<b>4.068.584</b>	<b>4.224.718</b>	<b>136.320</b>	<b>3.935.064</b>	<b>4.071.384</b>	<b>-3,6%</b>
Incoming	113.828	2.111.728	<b>2.225.556</b>	119.006	2.205.455	<b>2.324.461</b>	4,4%
Outgoing	42.306	1.956.856	<b>1.999.162</b>	17.314	1.729.609	<b>1.746.923</b>	-12,6%
<b>Containerized cargo</b>	<b>1.506.147</b>	<b>33.407.639</b>	<b>34.913.786</b>	<b>1.527.670</b>	<b>32.655.070</b>	<b>34.182.740</b>	<b>-2,1%</b>
Incoming	414.981	15.404.983	<b>15.819.963</b>	440.408	15.068.245	<b>15.508.653</b>	-2,0%
Outgoing	1.091.166	18.002.657	<b>19.093.823</b>	1.087.262	17.586.825	<b>18.674.087</b>	-2,2%
<b>Non-containerized cargo</b>	<b>5.561.654</b>	<b>5.990.058</b>	<b>11.551.713</b>	<b>5.590.695</b>	<b>5.981.046</b>	<b>11.571.741</b>	<b>0,2%</b>
Incoming	1.912.523	2.747.748	<b>4.660.271</b>	1.941.034	2.720.038	<b>4.661.071</b>	0,0%
Outgoing	3.649.131	3.242.311	<b>6.891.442</b>	3.649.662	3.261.009	<b>6.910.670</b>	0,3%
<b>Total general cargo</b>	<b>7.067.801</b>	<b>39.397.698</b>	<b>46.465.499</b>	<b>7.118.366</b>	<b>38.636.116</b>	<b>45.754.482</b>	<b>-1,5%</b>
Incoming	2.327.504	18.152.730	<b>20.480.234</b>	2.381.442	17.788.282	<b>20.169.724</b>	-1,5%
Outgoing	4.740.297	21.244.968	<b>25.985.265</b>	4.736.924	20.847.834	<b>25.584.757</b>	-1,5%
<b>Total throughput (tonnes)</b>	<b>8.764.619</b>	<b>57.239.140</b>	<b>66.003.759</b>	<b>8.720.073</b>	<b>57.238.012</b>	<b>65.958.084</b>	<b>-0,1%</b>
Incoming	3.910.013	31.029.214	34.939.227	3.824.750	31.640.760	35.465.510	1,5%
Outgoing	4.854.606	26.209.926	31.064.532	4.895.323	25.597.252	30.492.575	-1,8%
<b>Container traffic (TEU)</b>	<b>238.576</b>	<b>3.194.512</b>	<b>3.433.088</b>	<b>233.304</b>	<b>3.091.346</b>	<b>3.324.650</b>	<b>-3,2%</b>
Incoming	119.126	1.596.718	1.715.844	116.014	1.537.502	1.653.516	-3,6%
Outgoing	119.450	1.597.794	1.717.244	117.290	1.553.845	1.671.134	-2,7%

Distribution by type of packaging 2018

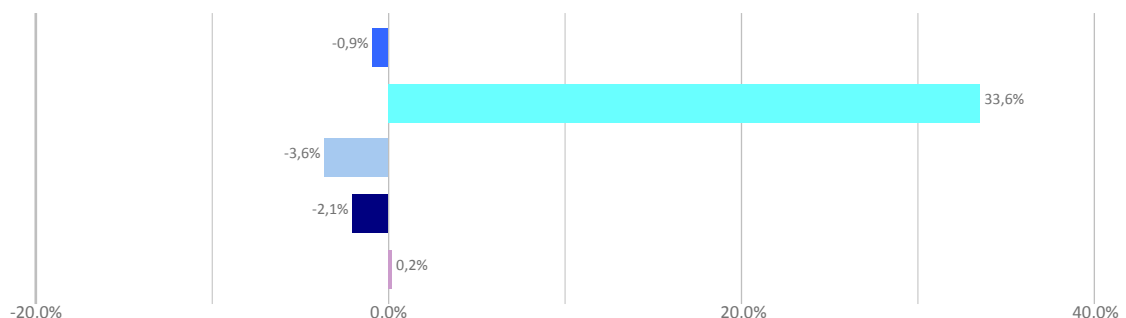


Distribution by type of packaging 2019



■ Hydrocarbons ■ Liquid bulk ■ Dry bulk ■ Containerized cargo ■ Non Containerized cargo

Annual growth by type of packaging



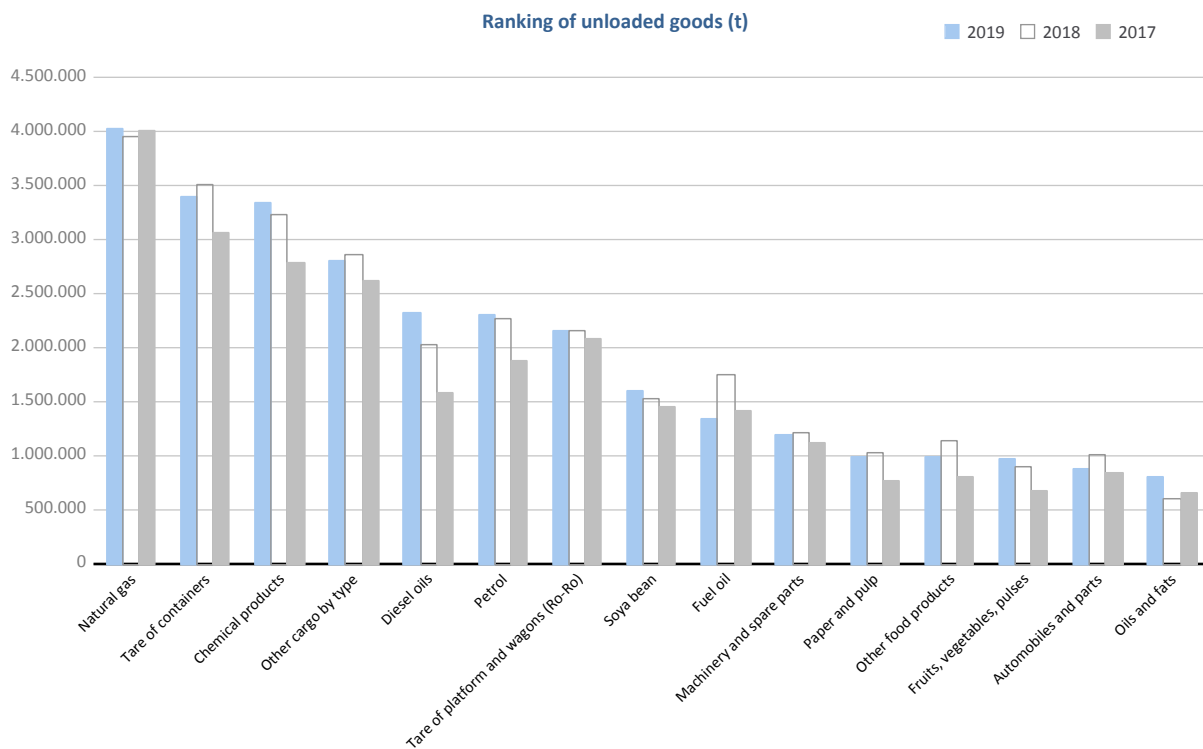
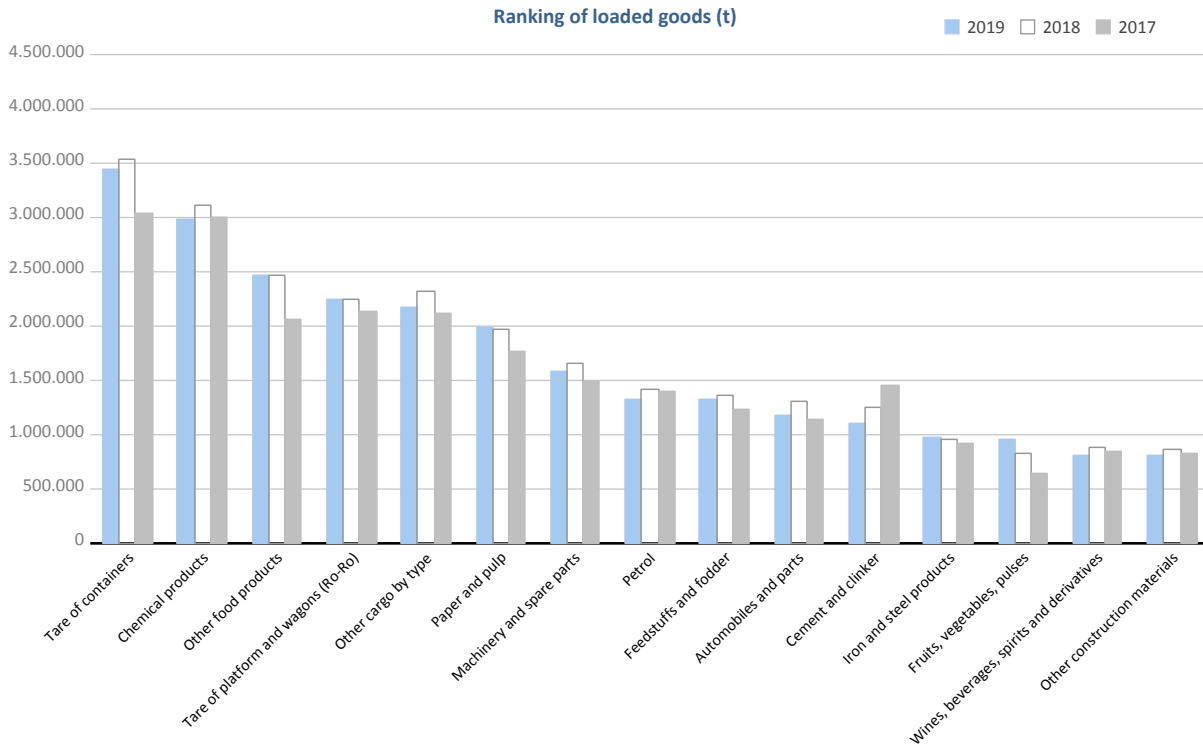
## GOODS TRAFFIC

Goods by classification 4.3.7.	Monthly accumulated				% of total accum. 2019
	2018	2019	Diff. 19-18	%	
<b>Tonnes</b>	<b>66.003.759</b>	<b>65.958.084</b>	<b>-45.675</b>	<b>-0,1%</b>	<b>100%</b>
<b>Energy</b>	<b>13.874.011</b>	<b>14.469.913</b>	<b>595.902</b>	<b>4,3%</b>	<b>21,9%</b>
Crude oil	143	4.902	4.759	3317,4%	0,0%
Fuel oil	2.218.850	1.569.071	-649.778	-29,3%	2,4%
Diesel oils	2.383.716	2.997.289	613.573	25,7%	4,5%
Petrol	3.694.767	3.646.959	-47.808	-1,3%	5,5%
Other petroleum products	392.194	411.989	19.796	5,0%	0,6%
Petroleum fuel gasses	36.388	111.049	74.661	205,2%	0,2%
Coal	102.555	119.348	16.793	16,4%	0,2%
Natural gas	4.161.228	4.038.627	-122.601	-2,9%	6,1%
Biofuel	884.171	1.570.680	686.509	77,6%	2,4%
<b>Iron, steel and metallurgical products</b>	<b>3.242.672</b>	<b>3.163.141</b>	<b>-79.530</b>	<b>-2,5%</b>	<b>4,8%</b>
Iron ore	14.903	14.151	-752	-5,0%	0,0%
Other minerals and metallic waste	322.026	352.050	30.024	9,3%	0,5%
Scrap iron	697.448	617.443	-80.005	-11,5%	0,9%
Iron and steel products	1.827.878	1.781.074	-46.805	-2,6%	2,7%
Other metallurgical products	380.416	398.423	18.007	4,7%	0,6%
<b>Non-metallic minerals</b>	<b>581.713</b>	<b>558.116</b>	<b>-23.597</b>	<b>-4,1%</b>	<b>0,8%</b>
Common salt	163.872	133.548	-30.324	-18,5%	0,2%
Other non-metallic minerals	417.841	424.568	6.727	1,6%	0,6%
<b>Fertilizers</b>	<b>793.715</b>	<b>749.827</b>	<b>-43.887</b>	<b>-5,5%</b>	<b>1,1%</b>
Phosphates	2.776	900	-1.876	-67,6%	0,0%
Potashes	622.522	561.529	-60.992	-9,8%	0,9%
Natural/artificial fertilizer	168.417	187.398	18.981	11,3%	0,3%
<b>Chemicals</b>	<b>6.350.393</b>	<b>6.329.514</b>	<b>-20.879</b>	<b>-0,3%</b>	<b>9,6%</b>
Chemical products	6.350.393	6.329.514	-20.879	-0,3%	9,6%
<b>Construction materials</b>	<b>2.830.889</b>	<b>2.577.110</b>	<b>-253.779</b>	<b>-9,0%</b>	<b>3,9%</b>
Asphalt	14.076	14.861	785	5,6%	0,0%
Cement and clinker	1.277.299	1.128.379	-148.920	-11,7%	1,7%
Other construction materials	1.539.515	1.433.871	-105.644	-6,9%	2,2%
<b>Agriculture, livestock and food</b>	<b>12.992.796</b>	<b>13.553.103</b>	<b>560.306</b>	<b>4,3%</b>	<b>20,5%</b>
Cereals and flours	924.587	882.471	-42.116	-4,6%	1,3%
Soya bean	1.645.729	1.866.994	221.264	13,4%	2,8%
Fruits, vegetables, pulses	1.726.911	1.934.150	207.240	12,0%	2,9%
Wines, beverages, spirits and derivatives	1.066.327	954.368	-111.959	-10,5%	1,4%
Canned goods	311.180	357.833	46.653	15,0%	0,5%
Tobacco, coffee, cocoa	721.844	693.773	-28.071	-3,9%	1,1%
Oils and fats	1.047.614	1.222.035	174.421	16,6%	1,9%
Other food products	3.608.000	3.452.237	-155.763	-4,3%	5,2%
Frozen fish	467.749	528.331	60.582	13,0%	0,8%
Feedstuffs and fodder	1.472.856	1.660.911	188.055	12,8%	2,5%
<b>Other cargo</b>	<b>11.580.213</b>	<b>11.266.297</b>	<b>-313.916</b>	<b>-2,7%</b>	<b>17,1%</b>
Timber	520.751	506.857	-13.894	-2,7%	0,8%
Paper and pulp	3.006.378	2.983.474	-22.904	-0,8%	4,5%
Machinery and spare parts	2.869.370	2.792.717	-76.653	-2,7%	4,2%
Other cargo by type	5.183.714	4.983.249	-200.465	-3,9%	7,6%
<b>Vehicles and transport parts</b>	<b>13.757.357</b>	<b>13.291.063</b>	<b>-466.294</b>	<b>-3,4%</b>	<b>20,2%</b>
Automobiles and parts	2.323.072	2.051.698	-271.375	-11,7%	3,1%
Tare of platform and wagons (Ro-Ro)	4.390.971	4.405.491	14.520	0,3%	6,7%
Tare of containers	7.043.314	6.833.874	-209.440	-3,0%	10,4%

# GOODS TRAFFIC

## Goods by classification 4.3.7.

### Ranking of goods (tonnes)

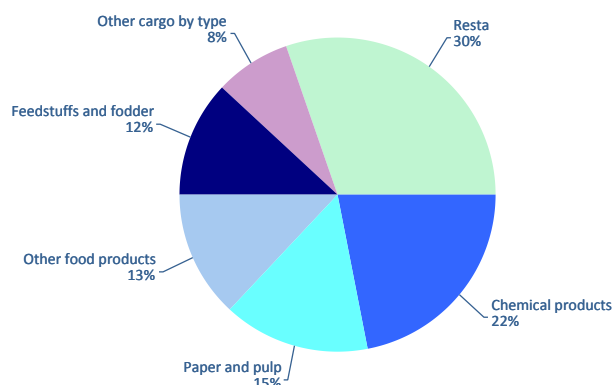


## GOODS TRAFFIC

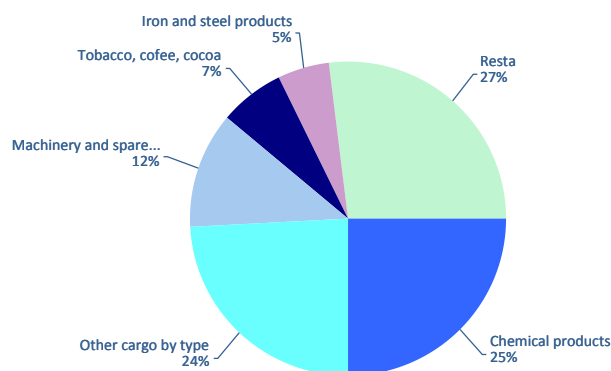
### Containerized goods by classification 4.3.7. (Tares & transits not included)

Containerized goods classification	Loaded			Unloaded			Total monthly accumulated		
	2018	2019	%	2018	2019	%	2018	2019	%
<b>Total tonnes (tares &amp; transits not included)</b>	<b>8.696.972</b>	<b>8.558.086</b>	<b>-1,6%</b>	<b>5.378.897</b>	<b>5.391.021</b>	<b>0,2%</b>	<b>14.075.870</b>	<b>13.949.107</b>	<b>-0,9%</b>
Chemical products	1.989.719	1.880.198	-5,5%	1.386.412	1.344.114	-3,1%	3.376.131	3.224.312	-4,5%
Other cargo by type	784.491	669.898	-14,6%	1.348.627	1.309.002	-2,9%	2.133.119	1.978.900	-7,2%
Paper and pulp	1.189.471	1.270.822	6,8%	174.259	180.853	3,8%	1.363.730	1.451.675	6,4%
Other food products	930.518	1.131.653	21,6%	48.037	69.275	44,2%	978.555	1.200.928	22,7%
Machinery and spare parts	563.856	504.688	-10,5%	599.135	646.011	7,8%	1.162.990	1.150.699	-1,1%
Feedstuffs and fodder	1.162.064	1.012.511	-12,9%	35.216	41.755	18,6%	1.197.280	1.054.266	-11,9%
Iron and steel products	246.635	247.471	0,3%	272.980	275.869	1,1%	519.615	523.340	0,7%
Other construction materials	272.486	296.207	8,7%	168.497	171.890	2,0%	440.983	468.098	6,1%
Tobacco, coffee, cocoa	91.746	89.308	-2,7%	339.000	362.097	6,8%	430.746	451.405	4,8%
Wines, beverages, spirits and derivatives	387.715	385.271	-0,6%	46.094	52.084	13,0%	433.809	437.355	0,8%
Automobiles and parts	198.861	169.738	-14,6%	245.349	222.512	-9,3%	444.211	392.250	-11,7%
Fruits, vegetables, pulses	78.621	100.858	28,3%	178.425	173.679	-2,7%	257.046	274.537	6,8%
Other metallurgical products	60.319	73.210	21,4%	127.717	136.220	6,7%	188.036	209.430	11,4%
Other non-metallic minerals	104.231	107.597	3,2%	117.486	99.057	-15,7%	221.716	206.654	-6,8%
Oils and fats	148.475	141.743	-4,5%	35.094	32.632	-7,0%	183.569	174.375	-5,0%
Other minerals and metallic waste	97.192	110.973	14,2%	26.515	33.904	27,9%	123.706	144.877	17,1%
Biofuel	102.232	97.401	-4,7%	15.076	19.221	27,5%	117.308	116.622	-0,6%
Canned goods	61.379	59.242	-3,5%	49.562	56.113	13,2%	110.941	115.355	4,0%
Cereals and flours	65.677	47.106	-28,3%	17.219	20.217	17,4%	82.896	67.323	-18,8%
Natural/artificial fertilizer	45.255	45.836	1,3%	16.459	18.506	12,4%	61.714	64.342	4,3%
Frozen fish	3.470	3.252	-6,3%	44.996	40.247	-10,6%	48.466	43.499	-10,2%
Scrap iron	7.918	13.965	76,4%	26.394	28.038	6,2%	34.312	42.003	22,4%
Other petroleum products	20.697	21.054	1,7%	10.330	9.736	-5,8%	31.027	30.789	-0,8%
Timber	19.968	13.292	-33,4%	10.198	16.523	62,0%	30.166	29.815	-1,2%
Coal	5.390	4.601	-14,6%	23.498	21.487	-8,6%	28.887	26.088	-9,7%
Fuel oil	15.092	16.620	10,1%	2.180	2.842	30,4%	17.273	19.462	12,7%
Common salt	14.965	15.055	0,6%	1.970	1.333	-32,3%	16.936	16.388	-3,2%
Cement and clinker	14.004	15.092	7,8%	39	82	107,6%	14.044	15.174	8,0%
Asphalt	9.594	9.462	-1,4%	109	0		9.702	9.462	-2,5%
Soya bean	1.546	541	-65,0%	7.965	2.549	-68,0%	9.511	3.089	-67,5%
Potashes	654	731	11,7%	1.946	1.957	0,5%	2.600	2.688	3,4%
Petroleum fuel gasses	1.160	1.290	11,3%	90	79	-12,9%	1.250	1.369	9,5%
Iron ore	280	473	69,1%	321	442	37,8%	601	916	52,4%
Phosphates	828	628	-24,2%	730	19	-97,4%	1.558	647	-58,5%
Diesel oils	52	0		914	603	-34,0%	966	603	-37,5%
Petrol	339	264	-22,2%	40	62	55,1%	379	326	-14,0%
Crude oil	51	37	-27,1%	0	0		51	37	-27,1%
Natural gas	21	0		18	9	-50,0%	39	9	-76,4%

Distribution of main goods  
Loaded 2019



Distribution of main goods  
Unloaded 2019

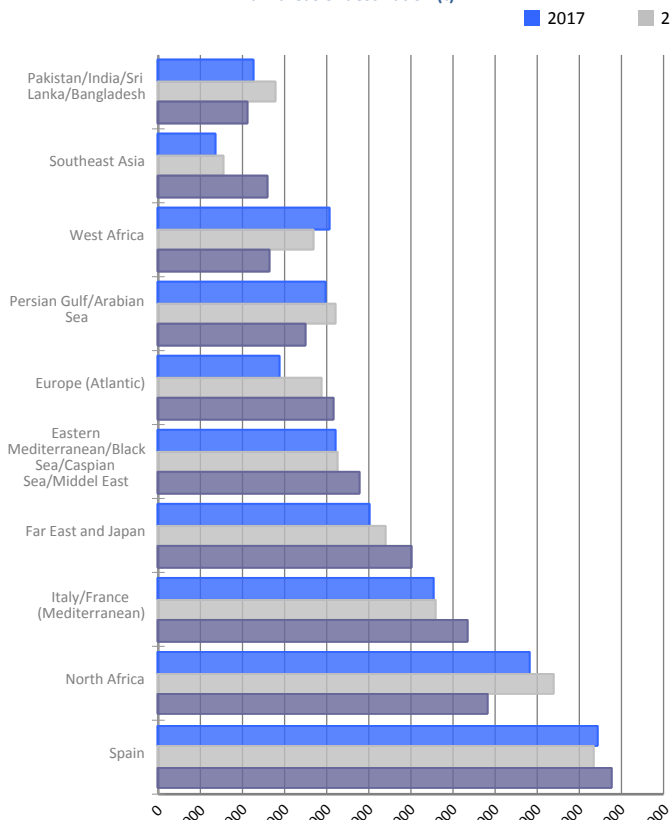


# MARITIME TRAFFIC BY ORIGIN/DESTINATION

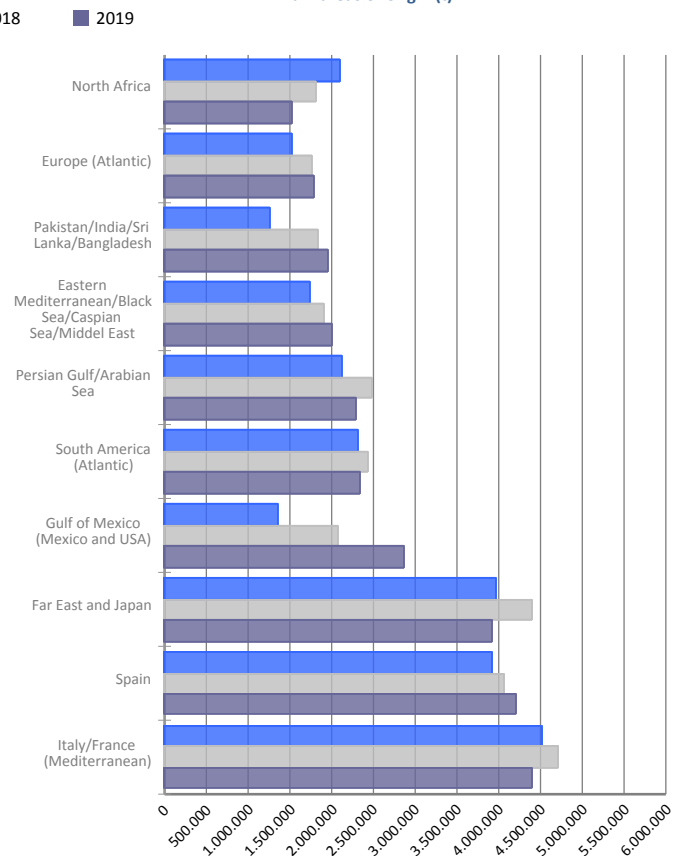
## Geographical areas. Tonnes

Geographical areas	Monthly accumulated				% of total accum. 2019
	2018	2019	Diff. 19-18	%	
<b>Tonnes</b>	<b>66.003.759</b>	<b>65.958.084</b>	<b>-45.675</b>	<b>-0,1%</b>	<b>100%</b>
Spain	9.235.529	9.588.804	353.275	3,8%	14,54%
Italy/France (Mediterranean)	8.009.868	8.076.294	66.425	0,8%	12,24%
Far East and Japan	7.100.284	6.910.267	-190.017	-2,7%	10,48%
North Africa	6.527.968	5.434.891	-1.093.077	-16,7%	8,24%
Eastern Mediterranean/Black Sea/Caspian Sea/Middel	4.013.725	4.396.691	382.966	9,5%	6,67%
Persian Gulf/Arabian Sea	4.597.417	4.052.281	-545.137	-11,9%	6,14%
Europe (Atlantic)	3.689.023	3.863.925	174.902	4,7%	5,86%
Gulf of Mexico (Mexico and USA)	2.875.944	3.480.660	604.715	21,0%	5,28%
Pakistan/India/Sri Lanka/Bangladesh	3.230.329	3.023.491	-206.838	-6,4%	4,58%
South America (Atlantic)	3.140.082	2.880.631	-259.451	-8,3%	4,37%
West Africa	2.822.132	2.594.513	-227.619	-8,1%	3,93%
Southeast Asia	1.982.715	2.582.987	600.272	30,3%	3,92%
Canada (Atlantic) and Great Lakes	1.404.550	1.734.721	330.171	23,5%	2,63%
Central America and Caribbean	1.429.517	1.652.627	223.110	15,6%	2,51%
Red Sea	1.871.559	1.470.932	-400.627	-21,4%	2,23%
North America (Atlantic)	1.032.087	1.360.310	328.223	31,8%	2,06%
North America (Pacific)	685.024	934.108	249.084	36,4%	1,42%
South America (Pacific)	1.166.804	864.034	-302.770	-25,9%	1,31%
South-Eastern Africa/Indian Ocean	587.123	484.344	-102.779	-17,5%	0,73%
Unknown area (Tare of empty containers)	382.241	408.300	26.058	6,8%	0,62%
Australia, New Zealand/Pacific Islands	219.838	163.274	-56.564	-25,7%	0,25%

Main areas of destination (t)



Main areas of origin (t)

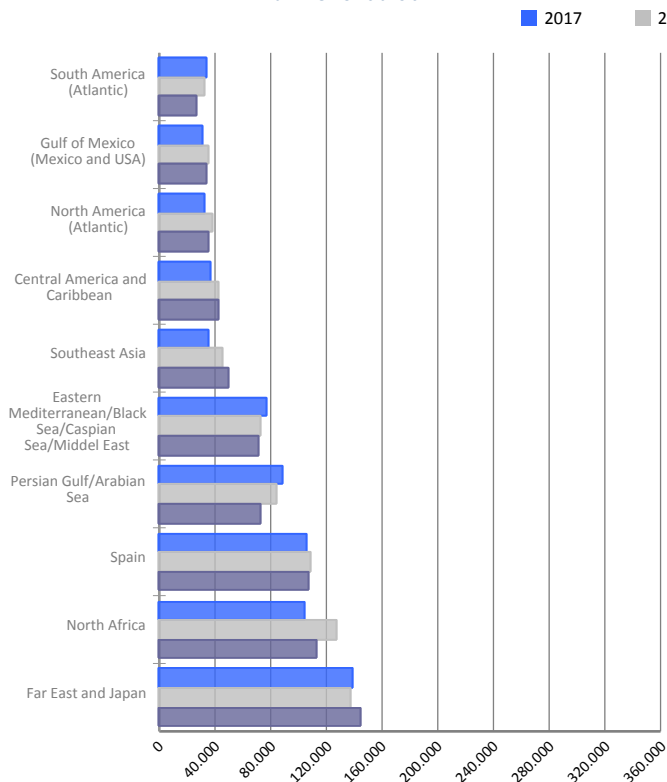


# MARITIME TRAFFIC BY ORIGIN/DESTINATION

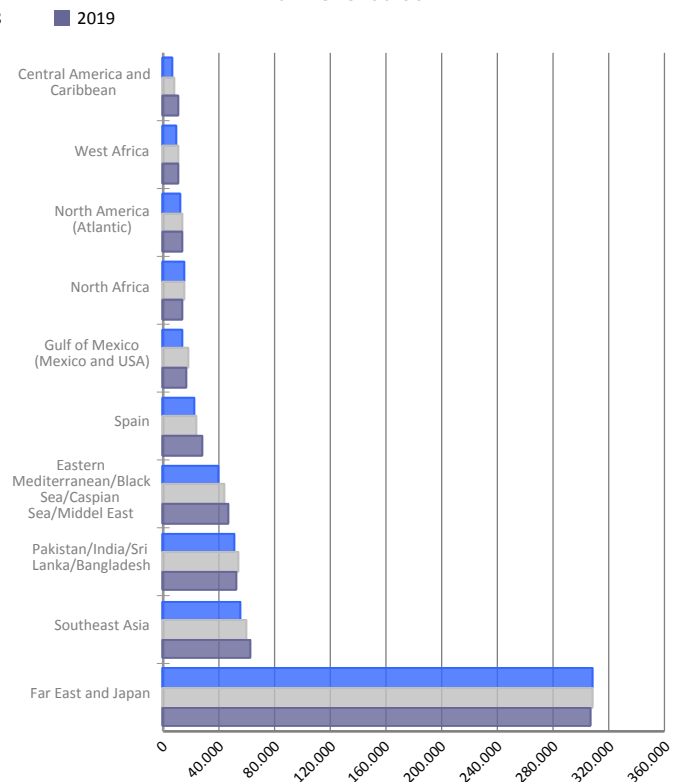
## Geographical areas. Full TEU non transit

Geographical areas	Monthly accumulated				% of total accum. 2019
	2018	2019	Diff. 19-18	%	
<b>Full TEU non transit</b>	<b>1.464.775</b>	<b>1.449.044</b>	<b>-15.731</b>	<b>-1,1%</b>	<b>100%</b>
Far East and Japan	445.144	451.270	6.126	1,4%	31,1%
Spain	133.126	135.235	2.109	1,6%	9,3%
North Africa	142.149	126.637	-15.513	-10,9%	8,7%
Eastern Mediterranean/Black Sea/Caspian Sea/Middel	116.190	118.764	2.574	2,2%	8,2%
Southeast Asia	105.695	112.785	7.089	6,7%	7,8%
Persian Gulf/Arabian Sea	94.384	83.110	-11.274	-11,9%	5,7%
Pakistan/India/Sri Lanka/Bangladesh	76.895	73.921	-2.974	-3,9%	5,1%
Central America and Caribbean	51.395	52.384	989	1,9%	3,6%
Gulf of Mexico (Mexico and USA)	52.497	50.942	-1.555	-3,0%	3,5%
North America (Atlantic)	51.265	49.343	-1.922	-3,7%	3,4%
South America (Atlantic)	40.364	34.123	-6.241	-15,5%	2,4%
South-Eastern Africa/Indian Ocean	25.475	29.379	3.904	15,3%	2,0%
South America (Pacific)	28.633	29.267	635	2,2%	2,0%
West Africa	25.646	28.291	2.645	10,3%	2,0%
Red Sea	24.010	26.672	2.663	11,1%	1,8%
Canada (Atlantic) and Great Lakes	12.775	12.344	-432	-3,4%	0,9%
North America (Pacific)	9.275	9.489	214	2,3%	0,7%
Italy/France (Mediterranean)	13.835	9.424	-4.411	-31,9%	0,7%
Australia, New Zealand/Pacific Islands	8.378	8.547	169	2,0%	0,6%
Europe (Atlantic)	7.646	7.120	-526	-6,9%	0,5%

Main areas of destination  
Full TEU non transit



Main areas of origin  
Full TEU non transit



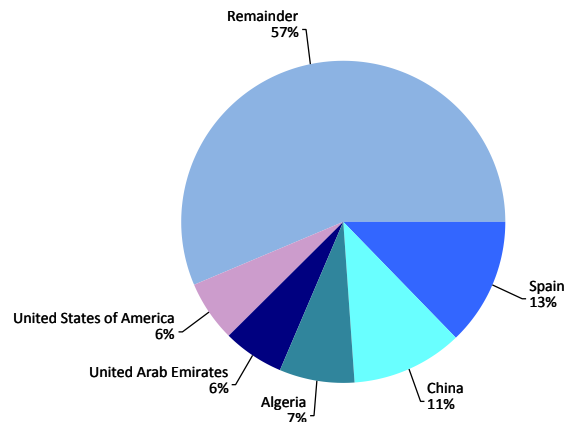
Note: From August 2014, the containerized cargo with origin or destination in Barcelona excludes maritime transit traffic and empty containers.

# MARITIME TRAFFIC BY ORIGIN/DESTINATION

## Ranking countries. Full TEU non transit

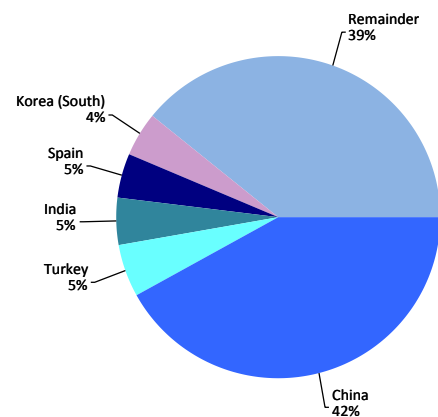
Loaded	Full TEU	% 19-18	% a/packaging
Spain	107.347	-1,4%	12,8%
China	92.807	14,6%	11,1%
Algeria	62.288	-18,4%	7,4%
United Arab Emirates	52.473	-12,5%	6,3%
United States of America	49.523	-3,1%	5,9%
Turkey	31.944	6,9%	3,8%
Mexico	28.560	-4,9%	3,4%
Morocco	24.219	-12,0%	2,9%
Saudi Arabia	22.583	19,9%	2,7%
Japan	21.289	5,2%	2,5%
South Africa	17.813	18,0%	2,1%
Egypt	16.318	24,9%	1,9%
Colombia	15.122	10,3%	1,8%
India	14.761	-12,4%	1,8%
Brazil	14.616	-22,8%	1,7%
Remainder	266.286	-4,4%	31,8%
<b>TOTAL</b>	<b>837.945</b>	<b>-2,5%</b>	<b>100%</b>

Main countries. Loaded



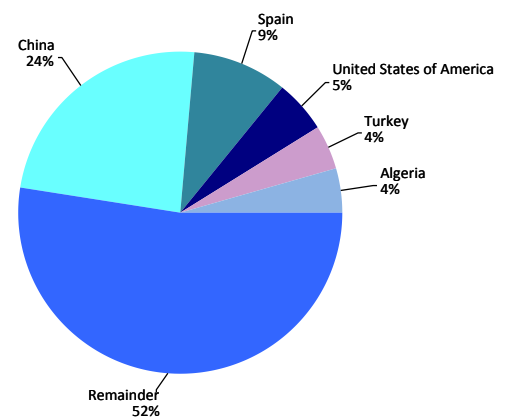
Unloaded	Full TEU	% 19-18	% a/packaging
China	256.093	1,1%	41,9%
Turkey	33.181	14,1%	5,4%
India	27.985	3,9%	4,6%
Spain	27.888	14,8%	4,6%
Korea (South)	27.186	-13,3%	4,4%
United States of America	26.458	12,1%	4,3%
Vietnam	22.007	-2,8%	3,6%
Bangladesh	17.768	-9,5%	2,9%
Thailand	11.123	-10,8%	1,8%
Saudi Arabia	10.569	-7,5%	1,7%
Indonesia	8.855	0,9%	1,4%
Egypt	8.808	-7,7%	1,4%
Japan	8.779	-4,9%	1,4%
Mexico	8.410	-18,6%	1,4%
Taiwan, Province of China	8.181	2,6%	1,3%
Remainder	107.810	3,2%	17,6%
<b>TOTAL</b>	<b>611.099</b>	<b>1,0%</b>	<b>100%</b>

Main countries. Unloaded



Total	Full TEU	% 19-18	% a/packaging
China	348.899	4,4%	24,1%
Spain	135.235	1,6%	9,3%
United States of America	75.981	1,7%	5,2%
Turkey	65.125	10,5%	4,5%
Algeria	63.848	-17,7%	4,4%
United Arab Emirates	55.348	-12,2%	3,8%
India	42.746	-2,4%	2,9%
Korea (South)	41.153	-15,1%	2,8%
Mexico	36.970	-8,4%	2,6%
Saudi Arabia	33.152	9,6%	2,3%
Vietnam	30.369	-2,3%	2,1%
Japan	30.068	2,1%	2,1%
Morocco	26.910	-12,4%	1,9%
Egypt	25.126	11,1%	1,7%
Thailand	22.709	-4,1%	1,6%
Remainder	415.407	-1,7%	28,7%
<b>TOTAL</b>	<b>1.449.044</b>	<b>-1,1%</b>	<b>100%</b>

Main countries. Total



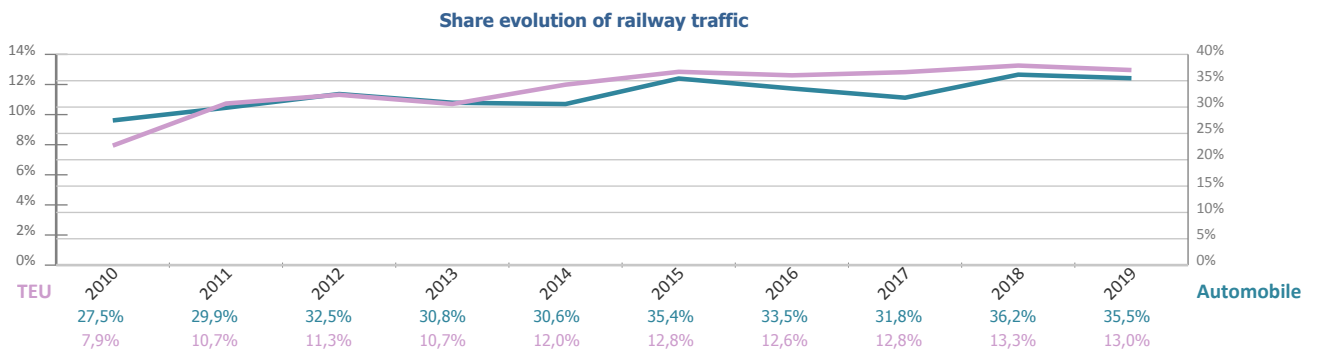
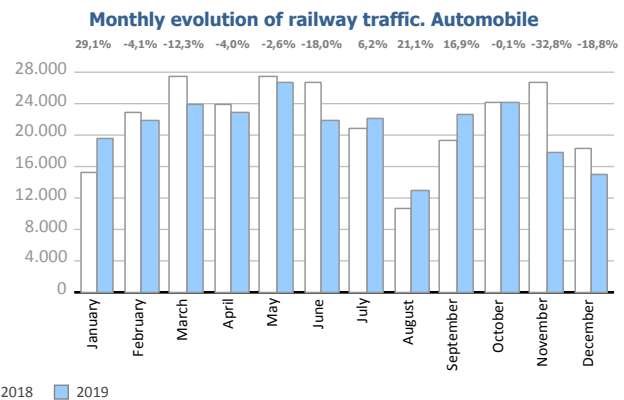
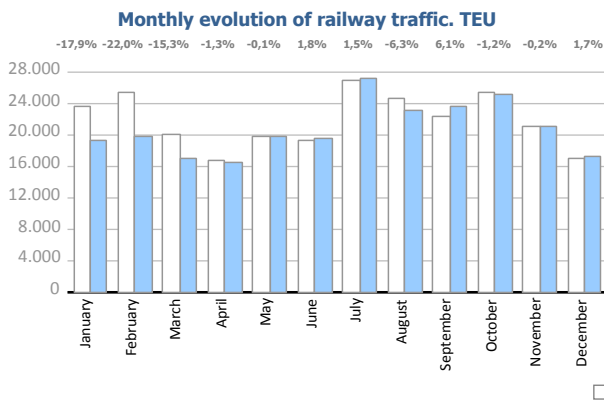
# RAILWAY TRAFFIC

## Monthly evolution of railway traffic. TEU

Monthly evolution of railway traffic	TEU 2018			TEU 2019			%		% of total port traffic 2019
	Loaded	Unloaded	Total	Loaded	Unloaded	Total	Monthly	Accumulated	
January	12.161	11.478	<b>23.639</b>	10.001	9.401	<b>19.402</b>	-17,9%	-17,9%	12,6%
February	12.805	12.744	<b>25.549</b>	10.632	9.302	<b>19.934</b>	-22,0%	-20,0%	12,3%
March	9.294	10.700	<b>19.994</b>	8.603	8.329	<b>16.932</b>	-15,3%	-18,7%	11,3%
April	8.281	8.581	<b>16.862</b>	9.225	7.418	<b>16.643</b>	-1,3%	-15,3%	10,7%
May	10.218	9.516	<b>19.734</b>	10.842	8.868	<b>19.710</b>	-0,1%	-12,4%	10,9%
June	9.423	9.861	<b>19.284</b>	10.341	9.288	<b>19.629</b>	1,8%	-10,2%	11,7%
July	13.613	13.318	<b>26.931</b>	15.305	12.028	<b>27.333</b>	1,5%	-8,2%	15,9%
August	11.797	12.759	<b>24.556</b>	11.359	11.659	<b>23.018</b>	-6,3%	-7,9%	14,1%
September	10.924	11.470	<b>22.394</b>	12.570	11.181	<b>23.751</b>	6,1%	-6,3%	14,9%
October	12.230	13.192	<b>25.422</b>	12.999	12.128	<b>25.127</b>	-1,2%	-5,7%	15,0%
November	10.048	10.963	<b>21.011</b>	10.003	10.976	<b>20.979</b>	-0,2%	-5,3%	13,5%
December	7.888	9.115	<b>17.003</b>	9.347	7.946	<b>17.293</b>	1,7%	-4,8%	12,3%
<b>Total</b>	<b>128.682</b>	<b>133.697</b>	<b>262.379</b>	<b>131.227</b>	<b>118.524</b>	<b>249.751</b>			<b>13,0%</b>

## Monthly evolution of railway traffic. Automobile

Monthly evolution of railway traffic	Automobile 2018			Automobile 2019			%		% of total port traffic 2019
	Loaded	Unloaded	Total	Loaded	Unloaded	Total	Monthly	Accumulated	
January	1.860	13.395	<b>15.255</b>	1.321	18.379	<b>19.700</b>	29,1%	29,1%	40,3%
February	1.926	20.840	<b>22.766</b>	974	20.854	<b>21.828</b>	-4,1%	9,2%	36,6%
March	2.339	25.028	<b>27.367</b>	2.380	21.629	<b>24.009</b>	-12,3%	0,2%	35,1%
April	1.606	22.335	<b>23.941</b>	2.145	20.836	<b>22.981</b>	-4,0%	-0,9%	35,6%
May	1.918	25.624	<b>27.542</b>	1.857	24.965	<b>26.822</b>	-2,6%	-1,3%	36,6%
June	2.833	23.945	<b>26.778</b>	1.764	20.184	<b>21.948</b>	-18,0%	-4,4%	33,7%
July	2.962	17.985	<b>20.947</b>	1.968	20.270	<b>22.238</b>	6,2%	-3,1%	39,8%
August	989	9.738	<b>10.727</b>	2.157	10.829	<b>12.986</b>	21,1%	-1,6%	33,1%
September	2.683	16.752	<b>19.435</b>	1.839	20.872	<b>22.711</b>	16,9%	0,2%	42,5%
October	3.472	20.740	<b>24.212</b>	647	23.536	<b>24.183</b>	-0,1%	0,2%	34,6%
November	3.316	23.294	<b>26.610</b>	0	17.871	<b>17.871</b>	-32,8%	-3,4%	30,9%
December	2.221	16.152	<b>18.373</b>	0	14.923	<b>14.923</b>	-18,8%	-4,5%	27,2%
<b>Total</b>	<b>28.125</b>	<b>235.828</b>	<b>263.953</b>	<b>17.052</b>	<b>235.148</b>	<b>252.200</b>			<b>35,5%</b>

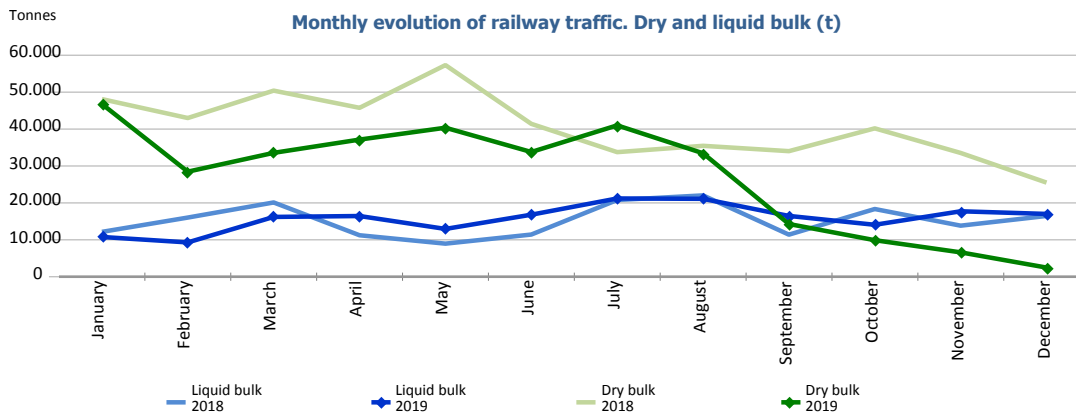




# RAILWAY TRAFFIC

## Monthly evolution of railway traffic. Dry and liquid bulk. Tonnes

Monthly evolution of railway traffic	Tonnes 2018			Tonnes 2019			%	
	Dry bulk	Liquid bulk	Total	Dry bulk	Liquid bulk	Total	Monthly	Accumulated
January	48.122	12.147	<b>60.269</b>	46.102	10.766	<b>56.868</b>	-5,6%	-5,6%
February	43.000	16.026	<b>59.026</b>	28.461	9.291	<b>37.752</b>	-36,0%	-20,7%
March	50.419	20.118	<b>70.537</b>	34.245	16.199	<b>50.444</b>	-28,5%	-23,6%
April	45.765	11.230	<b>56.995</b>	37.150	16.446	<b>53.596</b>	-6,0%	-19,5%
May	57.337	8.957	<b>66.294</b>	40.216	12.947	<b>53.163</b>	-19,8%	-19,6%
June	41.416	11.425	<b>52.841</b>	33.794	16.801	<b>50.595</b>	-4,3%	-17,4%
July	33.753	20.779	<b>54.532</b>	41.005	21.205	<b>62.210</b>	14,1%	-13,3%
August	35.464	22.029	<b>57.493</b>	33.453	21.099	<b>54.552</b>	-5,1%	-12,3%
September	34.019	11.396	<b>45.415</b>	16.654	16.470	<b>33.124</b>	-27,1%	-13,6%
October	40.198	18.344	<b>58.542</b>	9.893	14.071	<b>23.964</b>	-59,1%	-18,2%
November	33.530	13.830	<b>47.360</b>	6.600	17.726	<b>24.326</b>	-48,6%	-20,5%
December	25.504	16.461	<b>41.965</b>	2.473	17.014	<b>19.487</b>	-53,6%	-22,5%
<b>Total</b>	<b>488.527</b>	<b>182.742</b>	<b>671.269</b>	<b>330.046</b>	<b>190.035</b>	<b>520.081</b>		



## Railway traffic.

Railway gauge traffic (u)	Monthly accumulated		%	% of accumulated total 2019
	2018	2019		
Iberian gauge	7.038	7.383	4,9%	75,3%
UIC	381	349	-8,4%	3,6%
FGC	2.296	2.070	-9,8%	21,1%
<b>Total</b>	<b>9.715</b>	<b>9.802</b>	<b>0,9%</b>	<b>100%</b>

